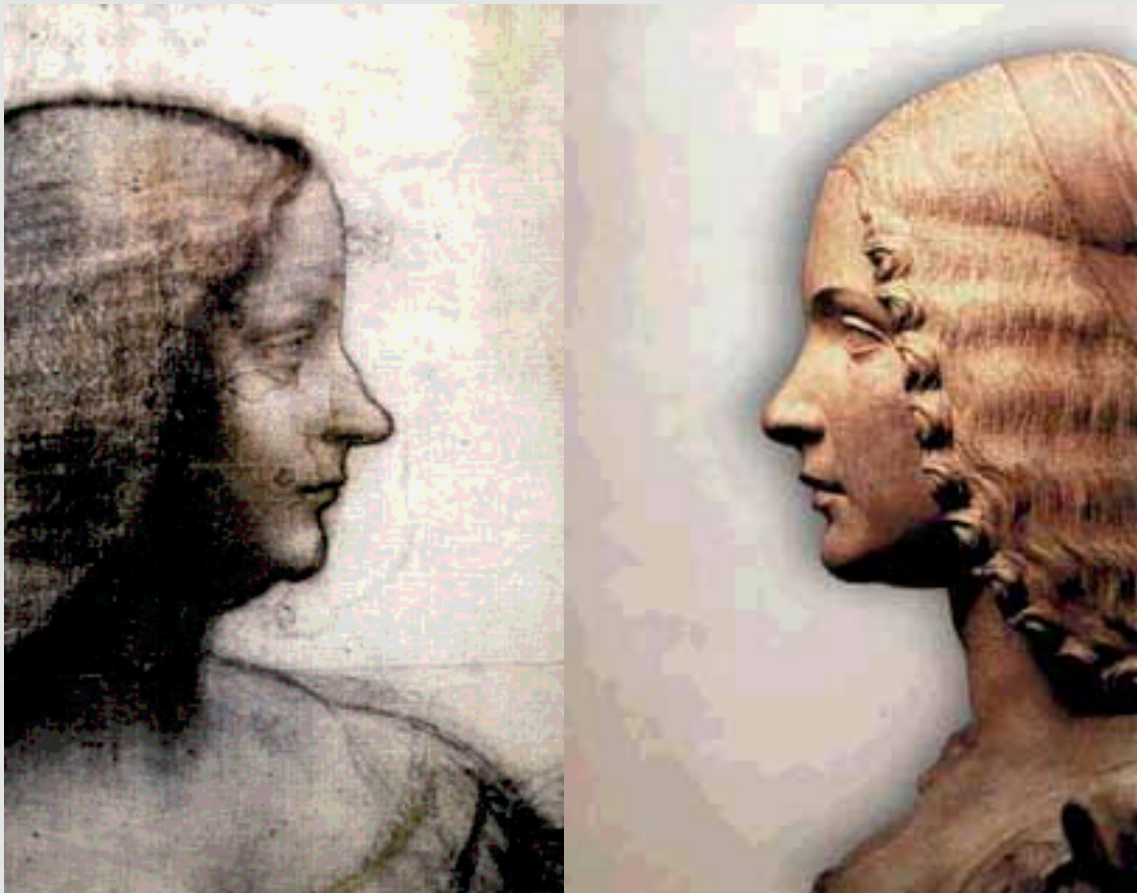


ÄSTHETISCHE CHIRURGIE

ESTHETIC SURGERY



Face Lift Scheren

Face Lift Scissors



Face - Lift Scheren Face - Lift Scissors



REES FACE LIFT

gerade/straight	Standard	gebogen/curved
1.100.17	17,0 cm	1.101.17
1.100.20	20,5 cm	1.101.20
Supercut		
S1.100.17	17,0 cm	S1.101.17
S1.100.20	20,5 cm	S1.101.20
TC		
TC1.974.17	17,0 cm	TC1.975.17
TC1.974.19	20,5 cm	TC1.975.19



ASTON FACE LIFT

TC gebogen/curved
16,5 cm TC1.975.16
20,5 cm TC1.975.20



BEUSE FACE LIFT

gerade/straight	Standard	gebogen/curved
1.116.14	14,5 cm	1.117.14
1.116.18	18,0 cm	1.117.18



**GORNEY-DELICATE SMAS-PLATYSMA
FACE LIFT**

20,5 cm	gebogen/curved
Supercut S1.347.20	
TC TC1.991.20	
Supercut TC S1.991.20	

Face - Lift Scheren Face - Lift Scissors



GORNEY-FREEMAN FACE LIFT

gerade/straight	19,0 cm	gebogen/curved
1.110.19	Standard	1.111.19
S1.110.19	Supercut	S1.111.19
TC1.974.18	TC	TC1.975.18
S1.974.18	Supercut TC	S1.975.18



GORNEY PLATYSMA FACE LIFT

gerade/straight	23,0 cm	gebogen/curved
1.110.23	Standard	1.111.23
S1.110.23	Supercut	S1.111.23
TC1.974.23	TC	TC1.975.23
S1.974.23	Supercut TC	S1.975.23



GORNEY FACE LIFT

gerade/straight	19,0 cm	gebogen/curved
1.114.18	Standard	1.115.185
S1.114.18	Supercut	S1.118.18
TC1.974.185	TC	TC1.975.185
S1.974.185	Supercut TC	S1.975.185

Face - Lift Scheren Face - Lift Scissors



KAYE FACE LIFT

gerade/straight	Supercut	gebogen/curved
S1.116.14	14,5 cm	S1.117.14
S1.116.18	18,5 cm	S1.117.18
S1.116.23	23,0 cm	S1.117.23

TC

TC1.970.145	14,5 cm	TC1.971.145
TC1.970.18	18,5 cm	TC1.971.18
TC1.970.23	23,0 cm	TC1.971.23

Supercut TC

S1.970.145	14,5 cm	S1.971.145
S1.970.18	18,5 cm	S1.971.18
S1.970.23	23,0 cm	S1.971.23



KAYE FACE LIFT

gerade/straight	15,0 cm	gebogen/curved
S1.110.15	Supercut	S1.110.15
TC1.970.15	TC	TC1.975.15
S1.970.15	Supercut TC	S1.975.15



KAYE-FREEMANN FACE LIFT

18,5 cm	abgewinkelt/angled
Standard	1.115.17
Supercut	S1.115.17
TC	TC1.973.18
Supercut TC	S1.973.18



DAVIS FACE LIFT

17,0 cm	gebogen/curved
Standard	1.175.17
Supercut	S1.175.17

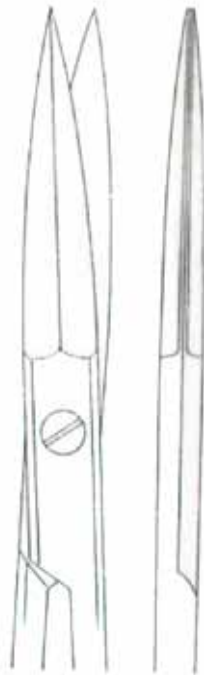
Tonsillen- & Nasenscheren
Tonsil Scissors and Nasal Scissors



McIndoe

Länge/length
19,0 cm

1.094.19



Prince

Länge/length
17,0 cm

1.105.17



Böttcher

Länge/length
18,0 cm

1.115.18

Tonsillen- & Nasenscheren
Tonsil Scissors and Nasal Scissors



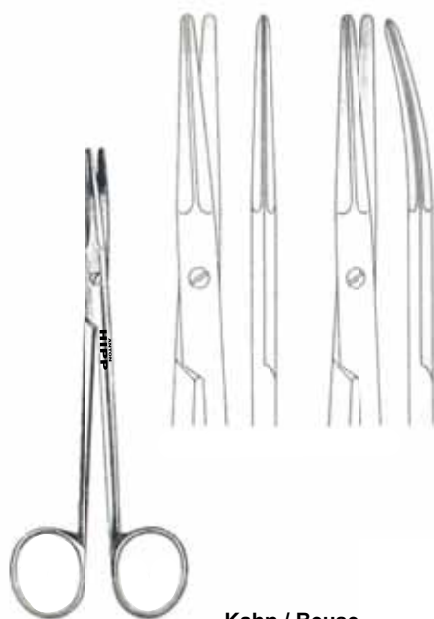
Potts Smith
Länge/length
19,0 cm **1.115.19**



Good
Länge/length
19,0 cm **1.120.19**



Dean
Länge/length
17,0 cm **1.124.17**



gerade/straight	Länge/length	gebogen/curved
1.116.14	14,5 cm	1.117.14
1.116.18	18,0 cm	1.117.18

Präparierscheren Dissecting Scissors



Joseph

gerade/straight	Länge/length	gebogen/curved
1.314.14	14,0 cm	1.315.14
1.314.17	17,0 cm	1.315.17



Sanvenero

gerade/straight	Länge/length	gebogen/curved
1.316.14	14,0 cm	1.317.14



Reynolds

gerade/straight	Länge/length	gebogen/curved
1.324.13	13,0 cm	1.325.13
1.324.15	15,0 cm	1.325.15
1.324.18	18,0 cm	1.325.18
1.324.20	20,5 cm	1.325.20
1.324.23	23,5 cm	1.325.23



Kelly

gerade/straight	Standard	gebogen/curved
1.344.16	16 cm	1.355.16
1.344.18	18 cm	1.355.18

S1.334.16	Supercut	S1.355.16
S1.334.18	16 cm	S1.355.18
	18 cm	

TC1.964.16	TC	TC1.965.16
	16 cm	

S1.964.16	Supercut TC	S1.965.16
	16 cm	

**Präparierscheren
Dissecting Scissors**



	PECK JOSEPH		
gerade/straight	14,5 cm	gebogen/curved	
1.318.14	Standard	1.319.14	
S1.318.14	Supercut	S1.319.14	
TC1.948.14	TC	TC1.949.14	
S1.948.14	Supercut TC	S1.949.14	



	LOCKLIN	
16 cm	abgewinkelt/angled	
Standard	1.445.16	
Supercut	S1.445.16	
TC	TC1.881.16	
Supercut TC	S1.881.16	

Gefäß- Scheren
Vascular Scissors**CHURCH**gerade/straight
1.440.17Länge/length
17,0 cmgebogen/curved
1.441.17**LINCOLN**gerade/straight
1.442.17Länge/length
17,0 cmgebogen/curved
1.443.17**LOCKLIN**

S-förmig gebogen/S-curved

Länge/length
16,0 cm**1.447.16**

Face - Lift Scheren
Face - Lift Scissors



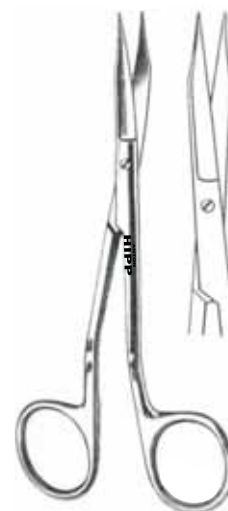
FREEMAN FACE LIFT
18 cm abgewinkelt/angled
Standard **1.345.17**
Supercut **S1.345.17**
TC **TC1.991.18**
Supercut TC **S1.991.18**



CASTANARES FACE LIFT
gerade/straight 16,0 cm gebogen/curved
1.440.16 Standard **1.441.16**
TC1.990.16 TC



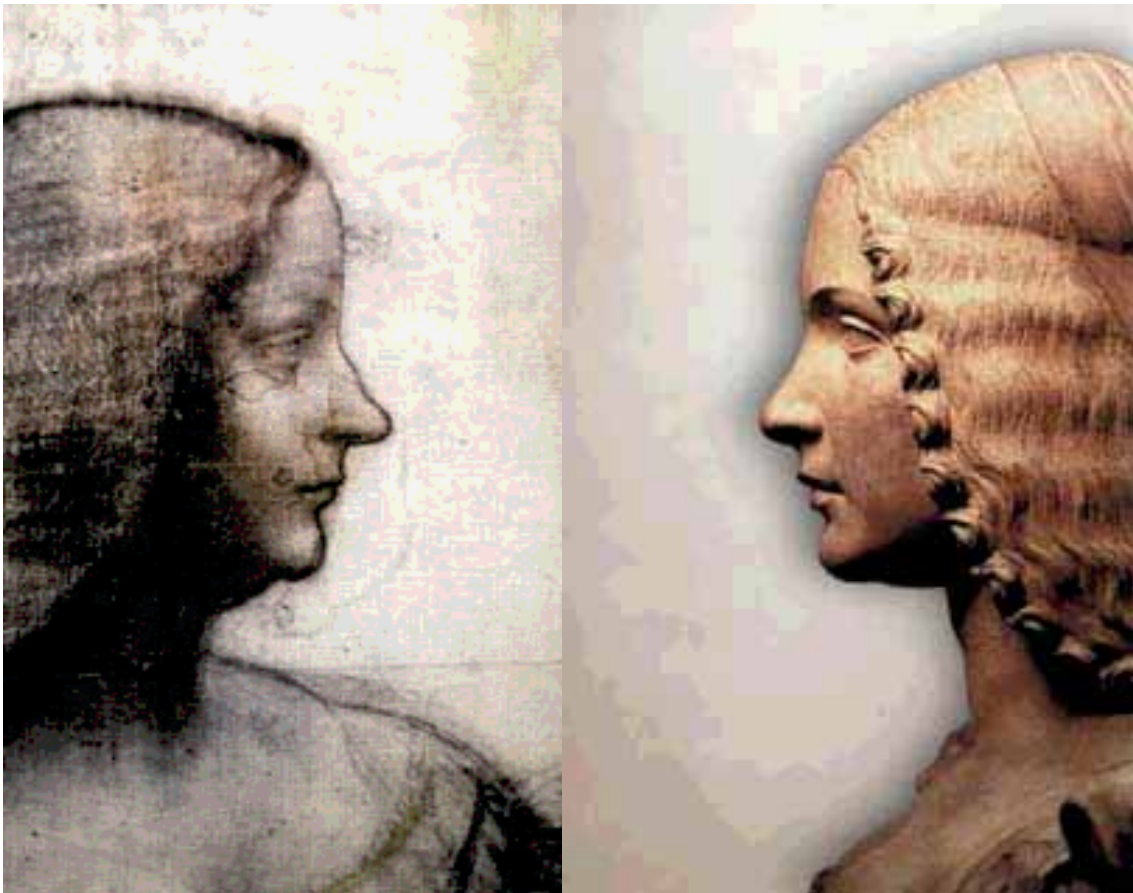
GOLDMAN FOX
gerade/straight 13,5 cm gebogen/curved
1.484.13Z Standard **1.485.13Z**
S1.484.13 Supercut **S1.485.13**
TC1.894.13 TC **TC1.895.13**
S1.894.13 Supercut TC **S1.895.13**



GOLDMANN FOX
S-förmig gebogen/S-curved
Länge/length
13,0 cm **1.487.13**

Scheren

Scissors



Tonsillen- & Nasenscheren
Tonsil Scissors and Nasal Scissors



Fomon
Doppelblatt/double blade
Länge/length
13,5 cm **1.129.13**



Fomon
stark gebogen/strong curved
Länge/length
13,5 cm **1.131.13**



Fomon
abgewinkelt mit Blatt
angled with blade
Länge/length
13,5 cm **1.135.13**



Fomon
abgewinkelt/angled
Länge/length
13,5 cm **1.137.13**

Tonsillen- & Nasenscheren
Tonsil Scissors and Nasal Scissors



Cottle
Länge/length
16,0 cm **1.139.16**



Heymann
Länge/length
18,0 cm **1.147.18**



Heymann
Länge/length
20,0 cm **1.147.20**



Knight
Länge/length
18,0 cm **1.149.18**



Jackson
Länge/length
20,0 cm **1.149.20**

Nasenscheren
Nasal Scissors

CAPLAN TC
abgewinkelt/angled 19,5 cm 26.841.20TC



GORNEY TURBINATE
abgewinkelt/angled 20,5 cm 26.842.20TC



SEILER TURBINATE
seitw. gewinkelt/angled 20,5 cm 1.137.17

Blepharoplastic Scheren Blepharoplasty Scissors



PAR		
gerade/straight	Standard	gebogen/curved
1.054.11	11,5 cm	1.055.17
1.064.14	14,5 cm	1.065.20
Supercut		
S1.054.11	11,5 cm	S1.055.11
S1.054.14	14,5 cm	S1.055.14
TC		
TC1.868.11	11,5 cm	TC1.869.11
TC1.844.14	14,5 cm	TC1.845.14
Supercut TC		
S1.868.11	11,5 cm	S1.869.11
S1.844.14	14,5 cm	S1.845.14



KAYE BLEPHAROPLASTY		
gerade/straight	11,5 cm	gebogen/curved
1.058.11	Standard	1.059.11
S1.058.11	Supercut	S1.058.11
TC1.958.11	TC	TC1.959.11
S1.958.11	Supercut TC	S1.959.11



SHEA		
gerade/straight	12,0 cm	gebogen/curved
1.254.11	Standard	1.255.11
S1.254.11	Supercut	S1.255.11



GREENBERG PAR		
gerade/straight	11,5 cm	gebogen/curved
1.344.11	Standard	1.345.11
S1.344.11	Supercut	S1.345.11
TC1.956.11	TC	TC1.957.11
S1.956.11	Supercut TC	S1.957.11



KAYE BLEPHAROPLASTYC Ribbon Type		
gerade/straight	11,5 cm	gebogen/curved
1.716.10		1.717.10

Präparierscheren Dissecting Scissors



Strabismus

gerade/straight
1.250.09
1.250.11

Länge/length
9,0 cm
11,0 cm



gebogen/curved
1.251.09
1.251.11



Baby Lexer

gerade/straight
1.260.10

Länge/length
10,5 cm



gebogen/curved
1.261.10

Feine Scheren
Fine Scissors

Aebli gerade/straight
Länge/length
10,5 cm **1.264.10**



Aebli aufgewinkelt/angled
Länge/length
10,5 cm **1.265.10**



Mc Guire aufgebogen
angled up
Länge/length
10,5 cm **1.267.10**



La Grange S-förmig/S-form
Länge/length
11,5 cm **1.269.11**

Feine Scheren Fine Scissors



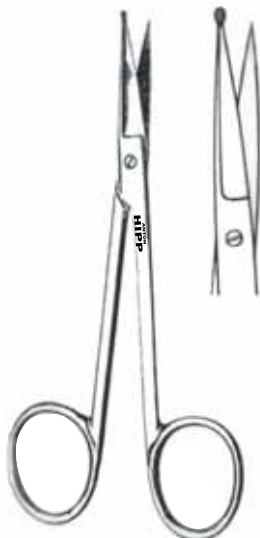
Stevens stumpf/blunt

gerade/straight	Länge/length	gebogen/curved
1.270.10	9,0 cm	1.271.09
1.270.11	10,5 cm	1.271.10
	11,5 cm	1.271.11



Stevens spitz/sharp

gerade/straight	Länge/length	gebogen/curved
1.274.10	9,0 cm	1.275.09
1.274.11	10,5 cm	1.275.10
	11,5 cm	1.275.11



Gefäßschere / Vessel scissor
mit Knopf/with button

Länge/length	1.276.11
11,0 cm	



Gefäßschere / Vessel - Scissor
seitwärts gewinkelt mit Knopf
angled to the side with button

Länge/length	1.277.11
11,0 cm	

Feine Scheren / Nasenscheren
Fine Scissors / Nasal Scissors



SEALY
gerade/straight 11,5 cm gebogen/curved
1.284.11 Standard 1.285.11
S1.284.11 Supercut S1.285.11
TC1.876.11 TC TC1.877.11
S1.876.11 Supercut TC S1.877.11



GRAEFE
abgewinkelt/angled
Länge/length 9,5 cm 1.306.09



CONVERSE / WILMER
aufgewinkelt/angled 10,0 cm 1.306.10



CONVERSE Doppelblatt
Double-Beveled-Blades
aufgewinkelt/angled 10,0 cm 1.306.11

Feine Scheren
Fine Scissors



gerade/straight
1.284.09
1.284.10

IRIS

Länge/length
9,cm
10,5 cm



gebogen/curved
1.285.09
1.285.10



IRIS

	mit großen Ringen/with big rings	
gerade/straight	Länge/length	gebogen/curved
1.286.10	10,0 cm	1.287.10

Feine Scheren
Fine Scissors

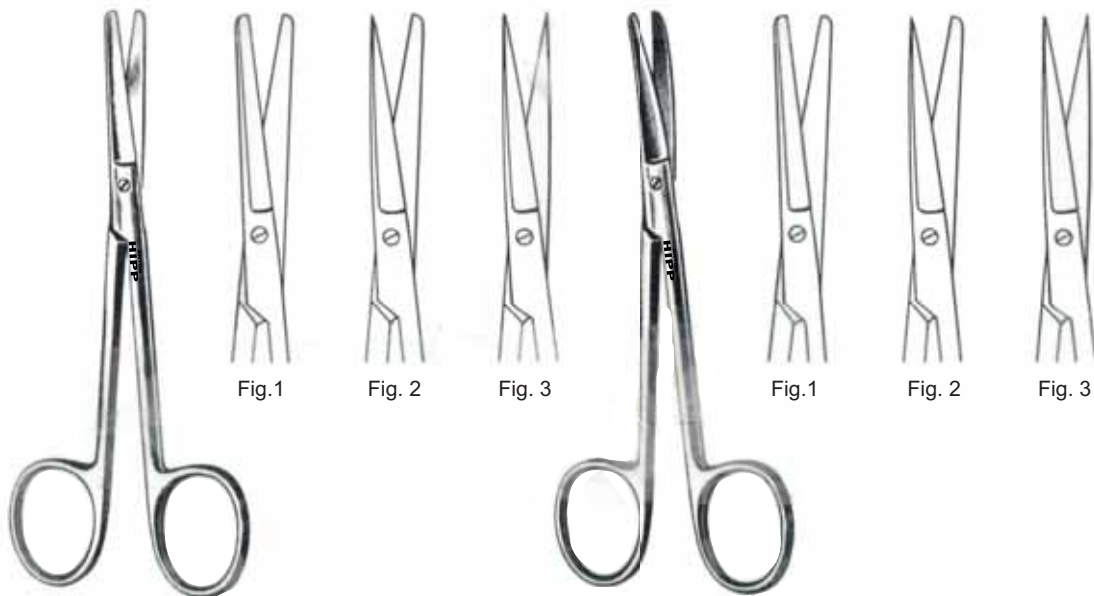


IRIS fino

gerade/straight
1.288.10
1.288.11

Länge/length
10,5 cm
11,5 cm

gebogen/curved
1.289.10
1.289.11



Wagner

gerade/straight 12,0 cm
Fig. 1 Fig. 2 Fig. 3
1.290.12 1.292.12 1.294.12

Wagner

gebogen/curved 12,0 cm
Fig. 1 Fig. 2 Fig. 3
1.291.12 1.293.12 1.295.12

Feine Scheren
Fine Scissors



IRIS

gerade/straight Länge/length
1.304.09 9,0 cm
1.304.10 10,5 cm
1.304.11 11,5 cm

gebogen/curved
1.305.09
1.305.10
1.305.11



IRIS

seitwärts abgewinkelt/angled
 Länge/length
 11,0 cm **1.297.11**



Bonn

gerade/straight Länge/length
1.304.08 8,0 cm

gebogen/curved
1.305.08



Wagner

flaches Modell/flat tipe

gerade/straight Länge/length
1.304.12 12,0 cm

gebogen/curved
1.305.12

Feine Scheren
Fine Scissors



IRIS fino
gerade/straight
1.308.10
1.308.11

Länge/length
10,5 cm
11,5 cm



IRIS fino
gebogen/curved
1.309.10
1.309.11



IRIS Inzision
seitwärts abgewinkelt/angled
Länge/length
11,5 cm
1.313.11



IRIS
Länge/length
11,5 cm
1.307.11



IRIS Inzision
gerade/straight
1.310.10
1.310.11

Länge/length
10,5 cm
11,5 cm

gebogen/curved
1.311.10
1.311.11

Feine Scheren Ribbon Type
Fine Scissors Ribbon Type



Ribbon Strabismus

gerade/straight
1.700.10

Länge/length
10,0 cm

gebogen/curved
1.701.10



Ribbon Strabismus

Länge/length
10,0 cm

gebogen/curved
1.703.10



Ribbon Iris

gerade/straight
1.704.09

Länge/length
9,5 cm

gebogen/curved
1.705.09



Ribbon Iris

gerade/straight
1.704.10

Länge/length
10,0 cm 4"

gebogen/curved
1.705.10



Ribbon Stevens

gerade/straight
1.710.09

Länge/length
9,5 cm

gebogen/curved
1.711.09



Ribbon Stevens

gerade/straight
1.714.09

Länge/length
9,5 cm

gebogen/curved
1.715.09

Mikro - Scheren
Micro - Scissors



Mikro Scheren / Micro Scissors
flacher Griff / flat handle

gerade/straight		gebogen/curved
7.142.14	14,5 cm	7.143.14
7.142.18	18,0 cm	7.143.18



Mikro Scheren / Micro Scissors
flacher Griff Titan / flat handle Titanium

gerade/straight		gebogen/curved
7.142.14TI	14,5 cm	7.143.14TI
7.142.18TI	18,0 cm	7.143.18TI



Mikro Scheren / Micro Scissors
runder Griff / round handle

gerade/straight		gebogen/curved
7.188.14	14,5 cm	7.189.14
7.188.18	18,0 cm	7.189.18



Mikro Scheren / Micro Scissors
runder Griff Titan / round handle Titanium

gerade/straight		gebogen/curved
7.188.14TI	14,5 cm	7.189.14TI
7.188.18TI	18,0 cm	7.189.18TI

Ligaturscheren Suture Scissors



EISELSBERG

Länge/length
11,0 cm **1.360.11**



SCHÖMACKER LOTH

Länge/length
12,0 cm **1.364.12**



LITTLER

Länge/length
11,5 cm **1.371.11**
14,0 cm **1.371.14**
18,0 cm **1.371.18**



SHORTBENT

Länge/length
9,0 cm **1.377.09**



SPENCER

Länge/length
9,0 cm **1.372.09**
10,5 cm **1.372.10**
12,0 cm **1.372.12**



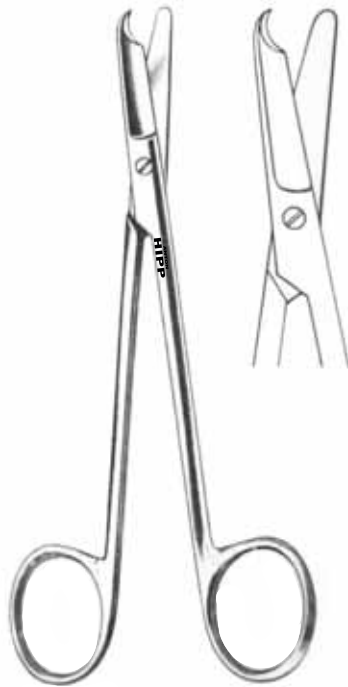
NORTHBENT

Länge/length
13,0 cm **1.377.12**



SPENCER

seitwärts abgewinkelt/angled
Länge/length
11,5 cm **1.379.11**

Ligaturscheren
Suture Scissors**LITTAUER**

Länge/length
13,0 cm **1.382.13**
14,0 cm **1.382.14**

**BUCK**

Länge/length
14,5 cm **1.392.14**
18,0 cm **1.392.18**

**HEATH**

S-förmig gebogen/S-curved

Länge/length
15,0 cm **1.397.15**

Drahtscheren Wire Cutting Scissors



BEEBEE

stumpf/blunt
gerade/straight
1.470.10
1.470.12

10,5 cm
12,0 cm

gebogen/curved
1.471.10
1.471.12



BEEBEE

spitz/sharp
gerade/straight
1.474.10
1.474.12

10,5 cm
12,0 cm

gebogen/curved
1.475.10
1.475.12



UNIVERSAL

Länge/length
12 cm

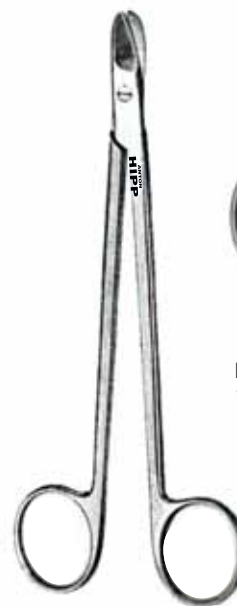
1.477.12



gerade/straight
1.494.16

SMITH serrated

16,0 cm



gebogen/curved
1.495.16

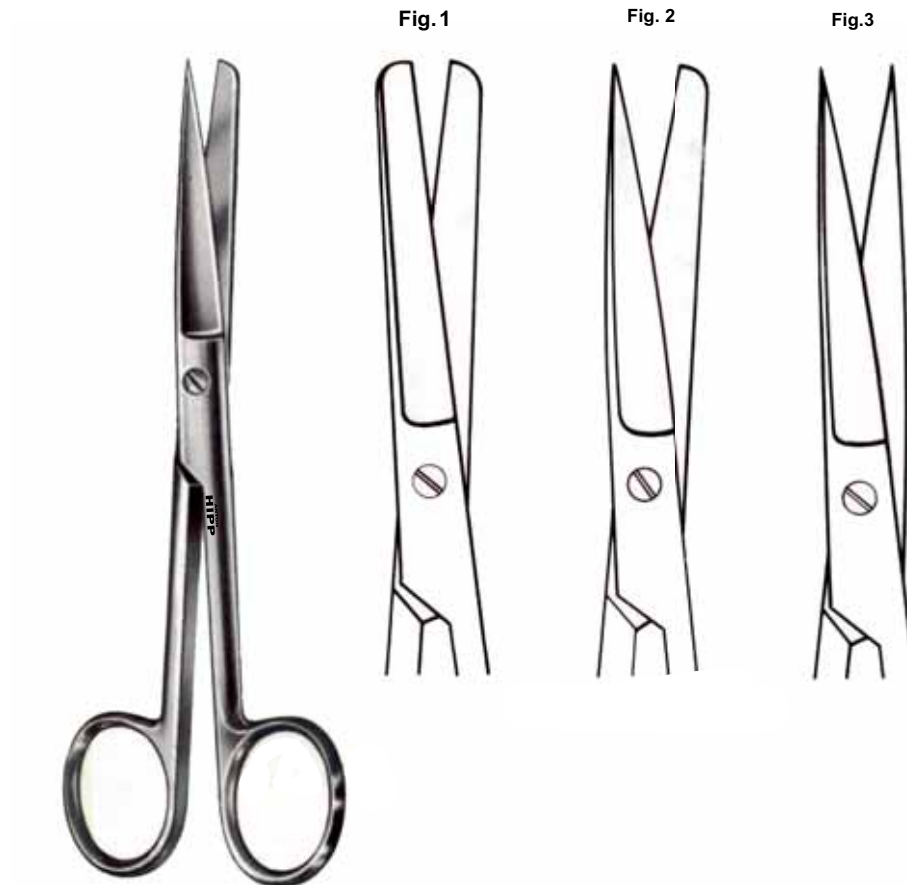


HARVEY

Länge/length
12,5 cm

1.480.12

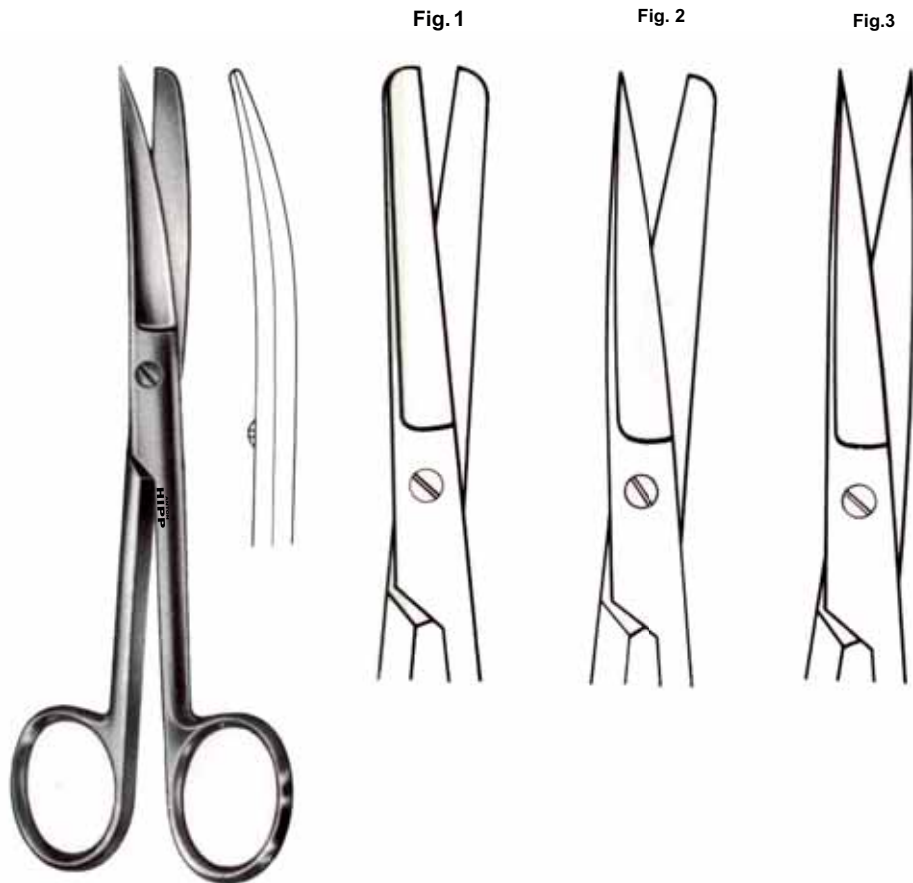
Chirurgische Scheren
Operating Scissors



STANDARD
gerade/straight

Länge/length	Fig. 1	Fig. 2	Fig.3
10,5 cm	1.000.10	1.002.10	1.004.10
11,5 cm	1.000.11	1.002.11	1.004.11
13,0 cm	1.000.13	1.002.13	1.004.13
14,5 cm	1.000.14	1.002.14	1.004.14
15,5 cm	1.000.15	1.002.15	1.004.15
16,5 cm	1.000.16	1.002.16	1.004.16
17,5 cm	1.000.17	1.002.17	1.004.17
18,5 cm	1.000.18	1.002.18	1.004.18
20,0 cm	1.000.20	1.002.20	1.004.20

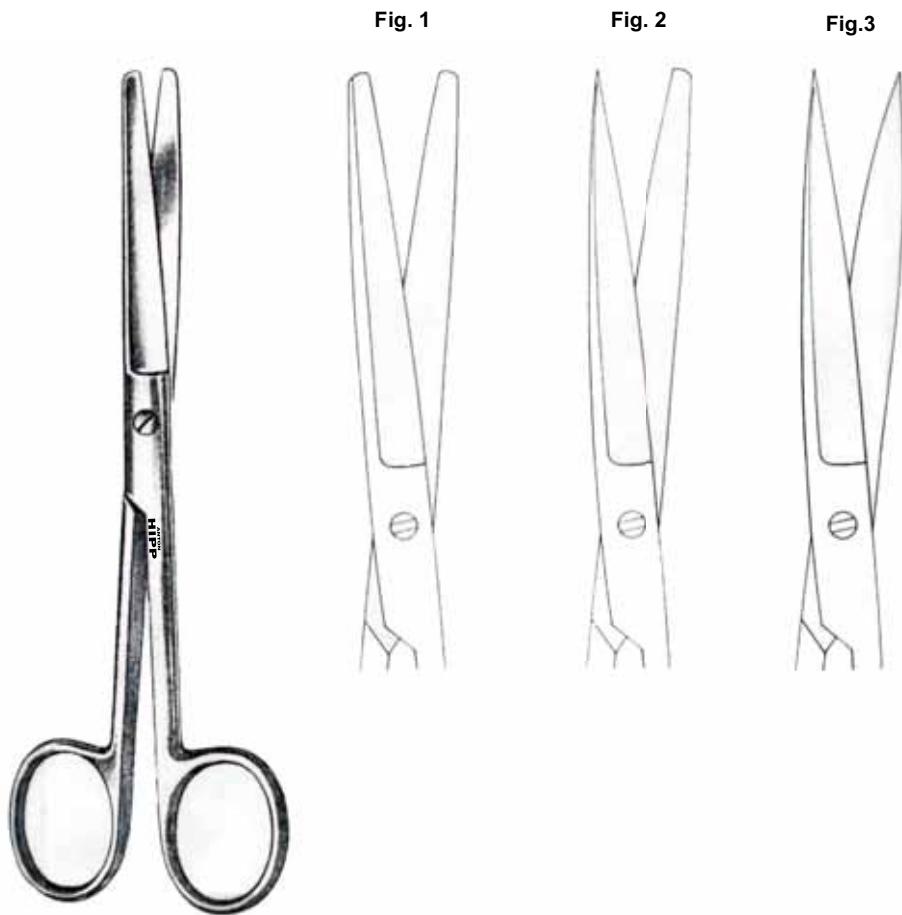
Chirurgische Scheren
Operating Scissors



STANDARD
gebogen/curved

Länge/length	Fig. 1	Fig. 2	Fig.3
10,5 cm	1.001.10	1.003.10	1.005.10
11,5 cm	1.001.11	1.003.11	1.005.11
13,0 cm	1.001.13	1.003.13	1.005.13
14,5 cm	1.001.14	1.003.14	1.005.14
15,5 cm	1.001.15	1.003.15	1.005.15
16,5 cm	1.001.16	1.003.16	1.005.16
17,5 cm	1.001.17	1.003.17	1.005.17
18,5 cm	1.001.18	1.003.18	1.005.18
20,0 cm	1.001.20	1.003.20	1.005.20

Chirurgische Scheren
Operating Scissors



GRAZIL
gerade/straight

Länge/length

13,0 cm
14,5 cm

Fig. 1

1.010.13
1.010.14

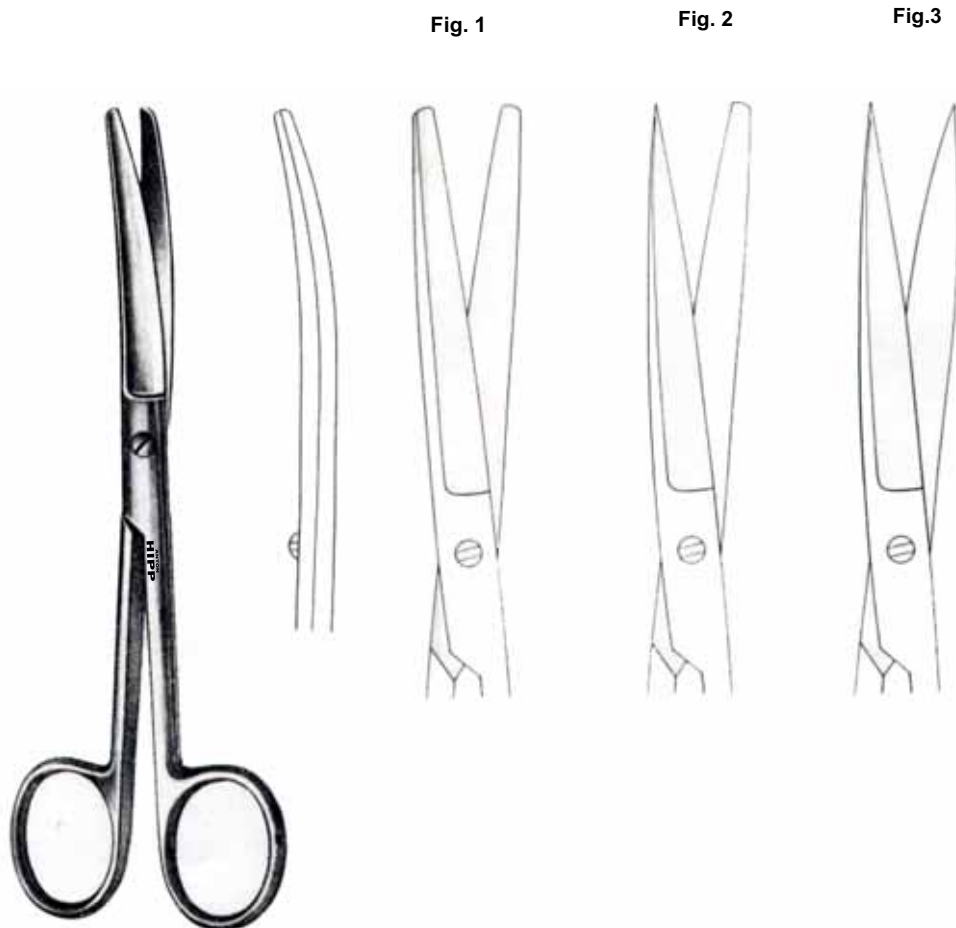
Fig. 2

1.012.13
1.012.14

Fig.3

1.014.13
1.014.14

Chirurgische Scheren
Operating Scissors



GRAZIL
gebogen/curved

Länge/length

13,0 cm
14,5 cm

Fig. 1

1.011.13
1.011.14

Fig. 2

1.013.13
1.013.14

Fig.3

1.015.13
1.015.14

Chirurgische Scheren
Operating Scissors



gerade/straight
1.020.15



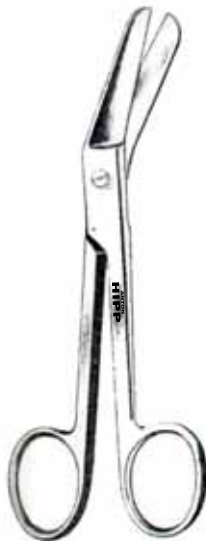
gebogen/curved
1.021.15



gerade/straight
1.022.14



DEAVER
gebogen/curved
14,5 cm
1.023.14



RICHTER
Länge/length
14,5 cm
1.027.14



Inzisionsscheren / Incision scissors
Länge/length
13,0 cm **1.028.13**
14,5 cm **1.028.14**
15,0 cm **1.028.15**
16,5 cm **1.028.16**

Chirurgische Scheren
Operating Scissors



gerade/ straight

1.030.14
1.030.15
1.030.17
1.030.19
1.030.23
1.030.30

MAYO

Länge/length

14,0 cm
15,0 cm
17,0 cm
19,0 cm
23,0 cm
30,0 cm



gebogen/ curved

1.031.14
1.031.15
1.031.17
1.031.19
1.031.23
1.031.30

Chirurgische Scheren
Operating Scissors**MAYO-STILLE**

gerade/ straight

1.034.15
1.034.17
1.034.19
1.034.21
1.034.23

Länge/length

15,0 cm
17,0 cm
19,0 cm
21,0 cm
23,0 cm

gebogen/ curved

1.035.15
1.035.17
1.035.19
1.035.21
1.035.23

Chirurgische Scheren
Operating Scissors



MAYO NOBLE

gerade/straight
1.036.16

Länge/length
16,0 cm

gebogen/curved
1.037.16



BROWN

gerade/straight
1.040.14

Länge/length
14,6 cm

gebogen/curved
1.041.14



LEXER

gerade/straight
1.038.16

Länge/length
16,0 cm

gebogen/curved
1.039.16



LEXER-FINO

gerade/straight
1.040.16

Länge/length
16,0 cm

gebogen/curved
1.0419.16

**Präparierscheren
Dissecting Scissors****AUFRICHT**Länge/length
14,5 cm**1.045.14****FERGUSON**Länge/length
18,0 cm
20,0 cm**1.047.18
1.047.20****BABY-METZENBAUM**gerade/straight
1.050.11Länge/length
11,5 cmgebogen/curved
1.051.11

**Präparierscheren
Dissecting Scissors**

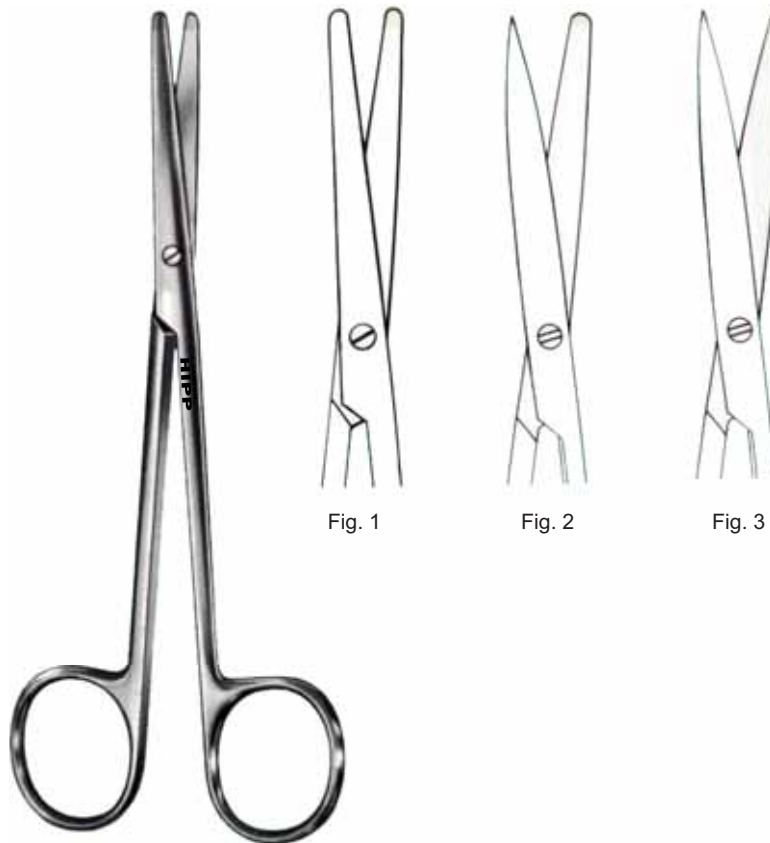


Fig. 1

Fig. 2

Fig. 3

METZENBAUM
gerade/straight

Länge/length	Fig. 1	Fig. 2	Fig. 3
13,0 cm	1.050.13	1.052.13	1.054.13
14,0 cm	1.050.14	1.052.14	1.054.14
18,0 cm	1.050.18	1.052.18	1.054.18
20,0 cm	1.050.20	1.052.20	1.054.20
23,0 cm	1.050.23	1.052.23	1.054.23
25,0 cm	1.050.25	1.052.25	1.054.25
28,0 cm	1.050.28	1.052.28	1.054.28
30,0 cm	1.050.30	1.052.30	1.054.30

**Präparierscheren
Dissecting Scissors**



Fig. 1



Fig. 2



Fig. 3

METZENBAUM
gebogen/curved

Länge/length

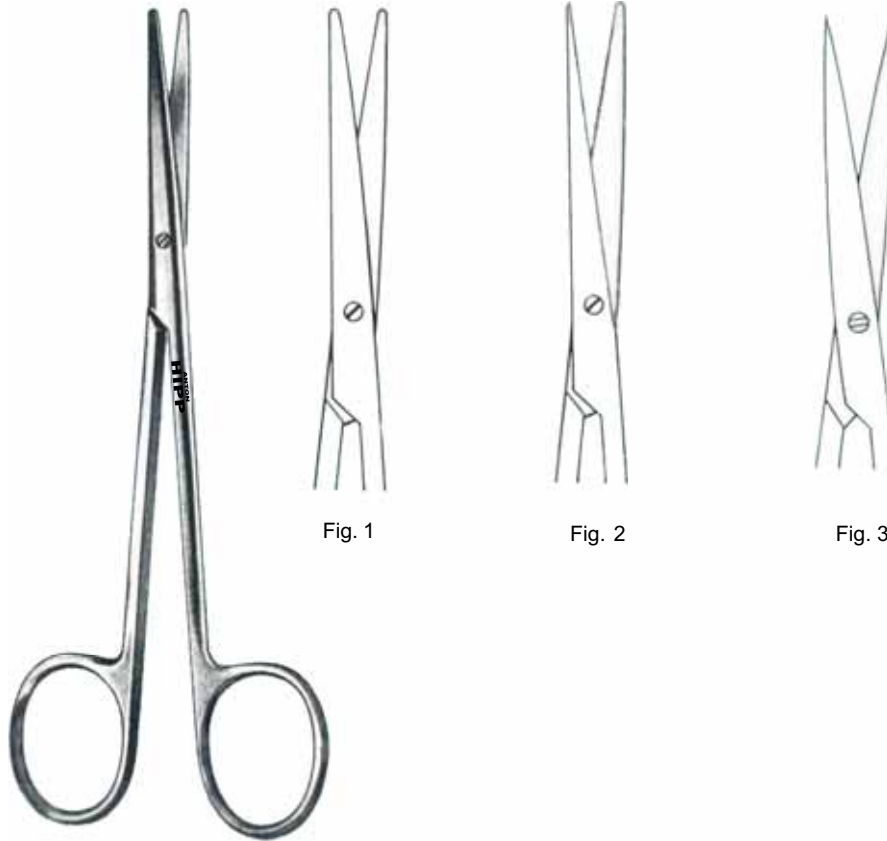
- 13,0 cm
- 14,0 cm
- 18,0 cm
- 20,0 cm
- 23,0 cm
- 25,0 cm
- 28,0 cm
- 30,0 cm

- | |
|-----------------|
| Fig. 1 |
| 1.051.13 |
| 1.051.14 |
| 1.051.18 |
| 1.051.20 |
| 1.051.23 |
| 1.051.25 |
| 1.051.28 |
| 1.051.30 |

- | |
|-----------------|
| Fig. 2 |
| 1.053.13 |
| 1.053.14 |
| 1.053.18 |
| 1.053.20 |
| 1.053.23 |
| 1.053.25 |
| 1.053.28 |
| 1.053.30 |

- | |
|-----------------|
| Fig. 3 |
| 1.055.13 |
| 1.055.14 |
| 1.055.18 |
| 1.055.20 |
| 1.055.23 |
| 1.055.25 |
| 1.055.28 |
| 1.055.30 |

**Präparierscheren
Dissecting Scissors**



METZENBAUM - Delicate

gerade/straight

Länge/length	Fig. 1	Fig. 2	Fig. 3
14,0 cm	1.060.14	1.062.14	1.064.14
18,0 cm	1.060.18	1.062.18	1.064.18
20,0 cm	1.060.20	1.062.20	1.064.20
23,0 cm	1.060.23	1.062.23	1.064.23

**Präparierscheren
Dissecting Scissors**



Fig. 1



Fig. 2



Fig. 3

METZENBAUM-Delicate
gebogen/curved

Länge/length	Fig. 1	Fig. 2	Fig. 3
14,0 cm	1.061.14	1.063.14	1.065.14
18,0 cm	1.061.18	1.063.18	1.065.18
20,0 cm	1.061.20	1.063.20	1.065.20
23,0 cm	1.061.23	1.063.23	1.065.23

**Präparierscheren
Dissecting Scissors**



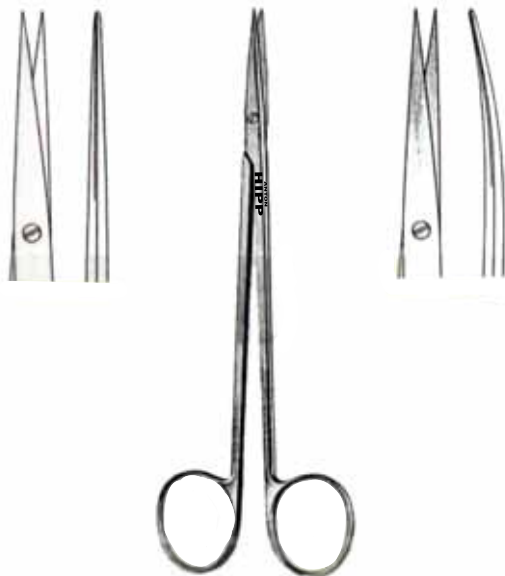
**Metzenbaum S-förmig
gebogen fino / S-curved fino**

Länge/length	
14,0 cm	1.067.14
18,0 cm	1.067.18
20,0 cm	1.067.20
23,0 cm	1.067.23
25,0 cm	1.067.25



Metzenbaum kurzer Schnitt/short blade

gerade/straight	Länge/length	gebogen/curved
1.070.15	15,0 cm	1.071.15



Nerv-Präparierschere

gerade/straight	Länge/length	gebogen/curved
1.074.15	15,0 cm	1.075.15

**Präparierscheren
Dissecting Scissors**



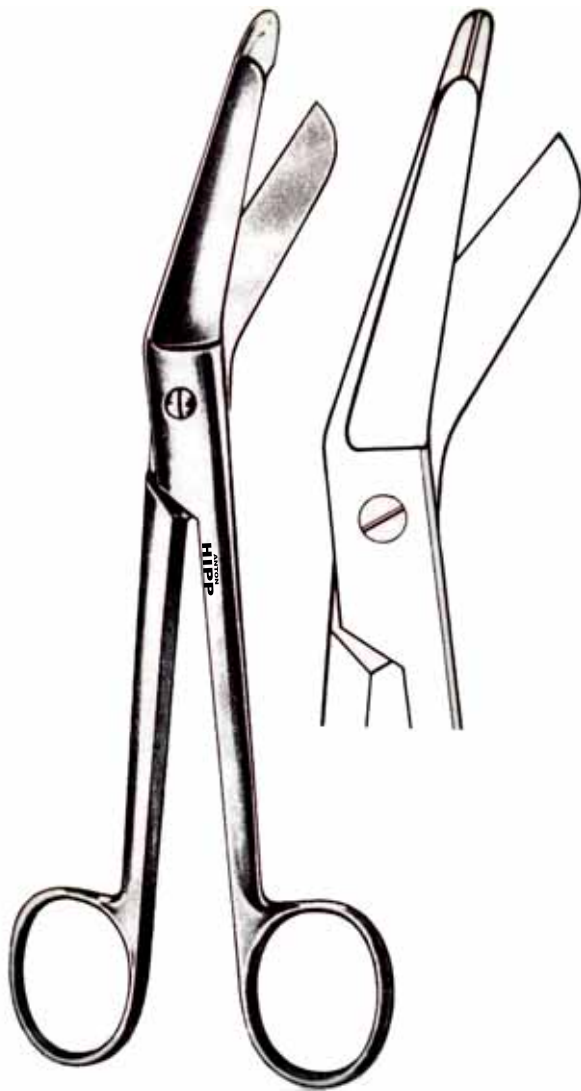
Tönnis Adson
Länge/length
18,0 cm **1.081.18**



Thorek
stark gebogen/strong curved
Länge/length
19,0 cm **1.089.19**
25,0 cm **1.089.25**



Tönnis
gerade/straight **1.090.18** Länge/length 18,0 cm gebogen/curved **1.091.18**

Verbandscheren
Bandage Scissors**LISTER**

Länge/length

9,0 cm	1.507.09
11,0 cm	1.507.11
14,0 cm	1.507.14
16,0 cm	1.507.16
18,0 cm	1.507.18
20,0 cm	1.507.20

**BERGMANN**Länge/length
23,0 cm**1.507.23**

Verbandscheren
Bandage Scissors

LISTER EXCENTRIC
Länge/length
16,0 cm **1.509.16**



LISTER
mit großem Ring / one big ring
Länge/length
20,0 cm **1.509.20**



KNOWLES
Länge/length
14,0 cm **1.514.14**



KNOWLES
abgewinkelt / angled
Länge/length
14,0 cm **1.517.14**

**Arterienklemmen
Clip Anlegezangen
Tuchklemmen**

**Artery Forceps
Clip- and Towelforceps**



Arterienklemmen
Artery Forceps



HARTMANN
gerade/straight 2.000.10 10,5 cm gebogen/curved 2.001.10



HALSTED MOSQUITO
gerade/straight 2.004.12 12,5 cm gebogen/curved 2.005.12
1 x 2 Zähne / teeth
2.006.12 12,5 cm 2.007.12



HALSTED MOSQUITO Titanium
gerade/straight 2.000.10TI 10,5 cm gebogen/curved 2.001.10TI
2.004.12TI 12,5 cm 2.005.12TI

Arterienklemmen Artery Forceps



HALSTED MOSQUITO Delicate

gerade/straight		gebogen/curved
2.002.10	10,5 cm	2.003.10
2.002.12	12,5 cm	2.003.12
2.002.14	14,5 cm	2.003.14
	1 x 2 Zähne / teeth	
2.008.10	10,5 cm	2.009.10
2.008.12	12,5 cm	2.009.12



KELLY

gerade/straight		gebogen/curved
2.020.14	14,5 cm	2.021.14



CRILE

gerade/straight		gebogen/curved
2.040.14	14,5 cm	2.041.14
2.040.16	16,5 cm	2.041.16
	1 x 2 Zähne / teeth	
2.042.14	14,5 cm	2.043.14
2.042.16	16,5 cm	2.043.16



ROCHESTER PEAN

gerade/straight		gebogen/curved
2.028.14	14,5 cm	2.029.14
2.028.16	16,0 cm	2.029.16
2.028.18	18,5 cm	2.029.18
2.028.20	20,5 cm	2.029.20
2.028.22	22,0 cm	2.029.22
2.028.24	24,0 cm	2.029.24

Arterienklemmen Artery Forceps



KOCHER

1 x 2 Zähne / teeth
gerade/straight

2.036.14	14,5 cm
2.036.16	16,0 cm
2.036.18	18,5 cm
2.036.20	20,5 cm
2.036.22	22,0 cm
2.036.24	24,0 cm

gebogen/curved

2.037.14
2.037.16
2.037.18
2.037.20
2.037.22
2.037.24



ADSON

gerade/straight

2.064.18	18,0 cm
2.066.18	18,5 cm

gebogen/curved

2.065.18

1 x 2 Zähne / teeth

2.067.18



MOSQUITO

gerade/straight

2.010.18	18,0 cm
2.010.21	21,0 cm

gebogen/curved

2.011.18
2.011.21

1 x 2 Zähne / teeth

2.012.18	18,5 cm
2.012.21	21,5 cm

2.013.18
2.013.21

RANEY Anlegezange und Gefäßklemmen
RANEY Clip forceps and Vascular Forceps



RANEY
Länge/length
16,0 cm **20.130.00**



LAHEY
Länge/length
16,0 cm **2.148.16**



ALLIS
Länge/length Zähne/teeth
12,5 cm 4 x 5 **2.392.12**
15,0 cm 4 x 5 **2.392.15**
15,0 cm 5 x 6 **2.394.15**
19,0 cm 5 x 6 **2.394.19**
25,0 cm 5 x 6 **2.394.25**

Tuchklemmen
Towel and Holding Forceps



BACKHAUS
Länge/length
8,5 cm **2.251.08**
11,0 cm **2.251.11**
13,0 cm **2.251.13**
15,0 cm **2.251.15**



LORNA
Länge/length
10,5 cm **2.257.10**
13,0 cm **2.257.13**



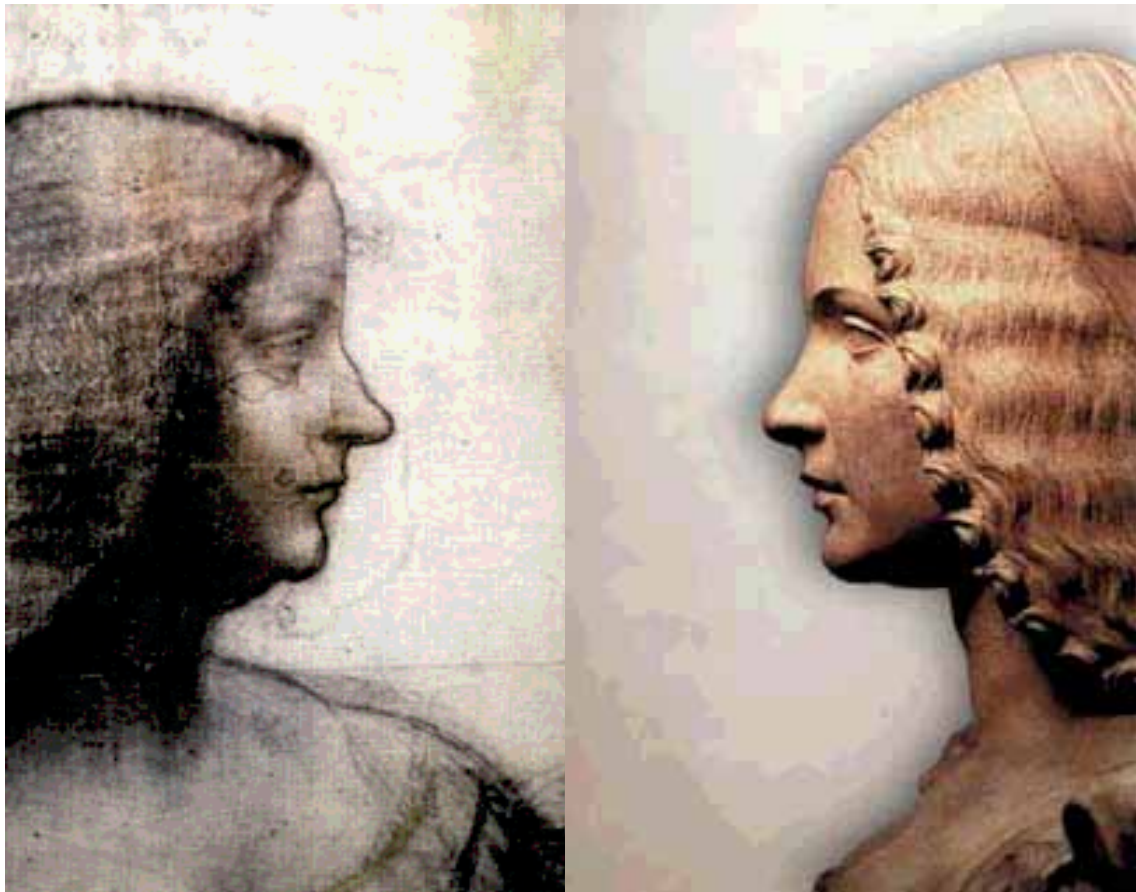
JONES
Länge/length
5,5 cm **2.256.05**
9,0 cm **2.256.09**



	FOERSTER	
gerade/straight	glatt/smooth	gebogen/curved
2.310.18	18,0 cm	2.311.18
2.310.20	20,0 cm	2.311.20
2.310.25	25,0 cm	2.311.25
	gerieft/serrated	
2.312.18	18,0 cm	2.313.18
2.312.20	20,0 cm	2.313.20
2.312.25	25,0 cm	2.313.25

Drahtspannzangen Nadelhalter

Wire Twister Nadelhalter



Drahtspannzangen
Wire Twisters



HEGAR BAUMGARTNER TC
profil/jaw
13,0 cm **TC9.022.13**
14,5 cm **TC9.022.14**



MAYO HEGAR TC
profil/jaw
14,0 cm **TC9.002.14**
16,0 cm **TC9.002.16**
18,0 cm **TC9.002.18**
20,5 cm **TC9.002.20**
24,0 cm **TC9.002.24**
26,0 cm **TC9.002.26**



Drahtspannzange / Wire twister
rund/round 15,0 cm flach/flat **22.500.01**
22.500.12 18,0 cm **22.500.02**



CORWIN TC
profil/jaw
16,0 cm **40.838.16**

Nadelhalter TC
Needle - Holders TC



WEBSTER TC
glatt/smooth 11,5 cm **TC9.030.13**



HALSEY TC
glatt/smooth 13,0 cm **TC9.028.13**
profil/jaw 13,0 cm **TC9.026.13**



WEBSTER CONVERSE TC
profil/jaw 12,0 cm **TC9.030.12**



DERF TC
profil/jaw 12,0 cm **TC9.032.12**

Nadelhalter TC
Needle - Holders TC



HEGAR VASCULAR TC
profil/jaw
14,0 cm **TC9.100.14**
18,0 cm **TC9.100.18**
20,5 cm **TC9.100.20**
23,0 cm **TC9.100.23**



MICRO VASCULAR TC
profil/jaw
14,0 cm **TC9.106.14**
18,0 cm **TC9.106.18**
20,5 cm **TC9.106.20**
23,0 cm **TC9.106.23**



CRILE WOOD TC
profil/jaw
15,0 cm **TC9.014.15**
18,0 cm **TC9.014.18**
20,5 cm **TC9.014.20**
23,0 cm **TC9.014.23**

Nadelhalter TC Needle - Holders TC



RYDER VASCULAR TC

glatt/smooth		profil/jaw
TC9.108.13	13,0 cm	TC9.110.13
TC9.108.15	15,0 cm	TC9.110.15
TC9.108.18	18,0 cm	TC9.110.18
TC9.108.20	20,5 cm	TC9.110.20
TC9.108.23	23,0 cm	TC9.110.23



DERF CONVERSE TC

profil/jaw
12,0 cm **TC9.034.12**



RYDER MICRO TC

profil/jaw	
13,0 cm	TC9.112.13
15,0 cm	TC9.112.15
18,0 cm	TC9.112.18
20,5 cm	TC9.112.20
23,0 cm	TC9.112.23

Nadelhalter TC
Needle - Holders TC

BABY OLSEN HEGAR
gebogen/curved
11,5 cm **1.350.11**



OLSEN HEGAR
gebogen/curved
14,0 cm **1.350.14**



OLSEN HEGAR
gebogen/curved
18,0 cm **1.350.18**



OLSEN HEGAR
gebogen/curved
17,0 cm **1.350.17**



OLSEN HEGAR
mit aufgebogenem Ring/
with one ring angled up
gebogen/curved
14,0 cm **1.356.14**

Nadelhalter TC Needle - Holders TC



OLSEN HEGAR TC
profil/jaw
14,5 cm **TC9.048.14**
16,5 cm **TC9.048.16**
18,0 cm **TC9.048.18**



FOSTER-GILLIES TC
runder Griff/round handle
gerade/straight profil/jaw gebogen/curved
TC9.050.11 11,5 cm **TC9.049.11**
TC9.050.15 15,0 cm **TC9.049.15**



GILLIES TC
profil/jaw
16,0 cm **TC9.049.16**



CASTROVIEJO
runder Griff/round handle
gerade/straight TC gebogen/curved
TC9.360.15 15,0 cm **TC9.361.15**
TC9.360.16 16,0 cm **TC9.361.16**
TC9.360.18 18,5 cm **TC9.361.18**
diamantbeschichtet/diamond dusted
8.660.15DD 15,0 cm **8.661.15DD**
8.660.16DD 16,0 cm **8.661.16DD**
8.660.18DD 18,5 cm **8.661.18DD**



Nadelhalter TC
Needle - Holders TC



CASTROVIEJO Delicate
flacher Griff/flat handle
diamantbeschichtet/diamond dusted
gerade/straight
14,5 cm **8.622.14DD**
18,5 cm **8.622.18DD**



CASTROVIEJO Titanium
flacher Griff/flat handle
diamantbeschichtet/diamond dusted
gerade/straight gebogen/curved
8.624.14TI 15,5 cm **8.625.15TI**
8.624.18TI 18,5 cm **8.625.18TI**



CASTROVIEJO RYDER
flacher Griff/flat handle
diamantbeschichtet/diamond dusted
gerade/straight
14,5 cm **8.626.14DD**
18,5 cm **8.626.18DD**

Nadelhalter TC Needle - Holders TC



CASTROVIEJO Delicate
runder Griff/round handle
diamantbeschichtet/diamond dusted
gerade/straight
14,5 cm **8.680.14DD**
18,5 cm **8.680.18DD**



CASTROVIEJO Titanium
runder Griff/round handle
diamantbeschichtet/diamond dusted
gerade/straight gebogen/curved
8.680.14TI 15,5 cm **8.681.15TI**
8.680.18TI 18,5 cm **8.681.18TI**



CASTROVIEJO RYDER
runder Griff/round handle
diamantbeschichtet/diamond dusted
gerade/straight
14,5 cm **8.672.14DD**
18,5 cm **8.672.18DD**



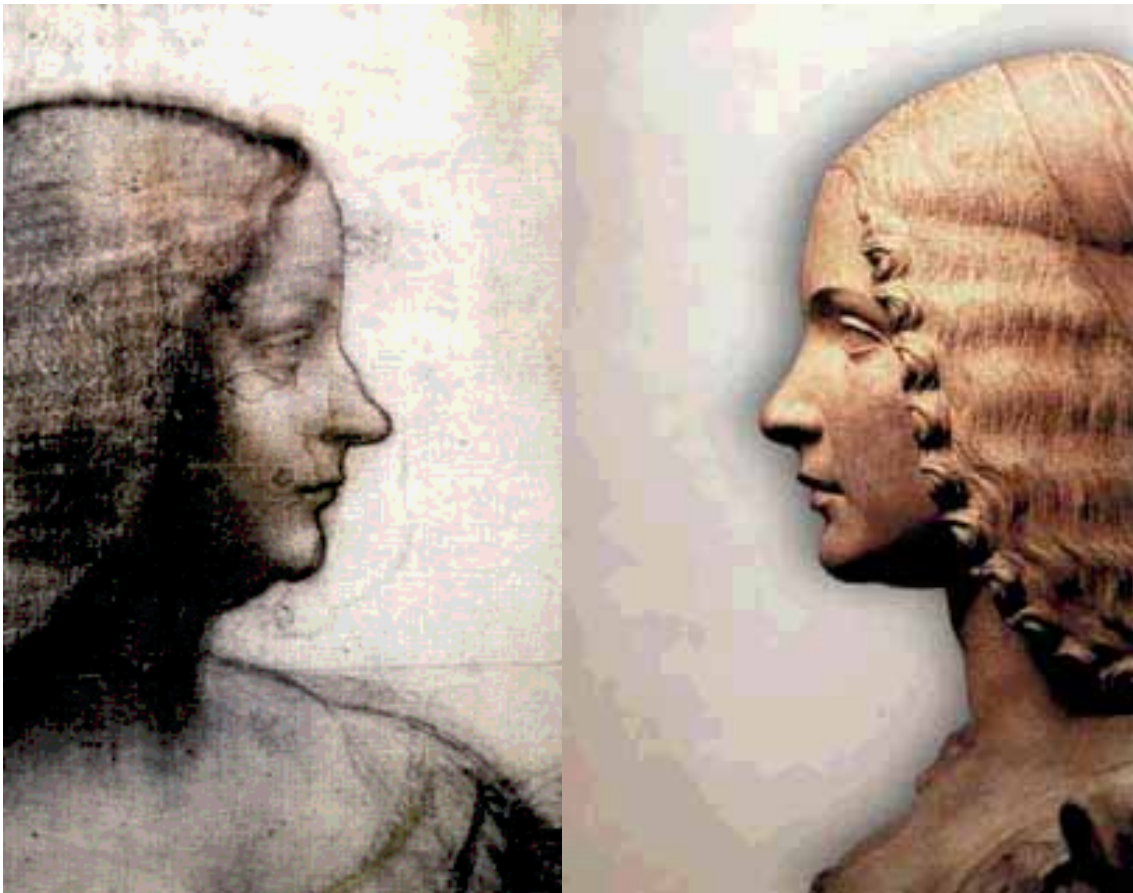
CASTROVIEJO-OLSEN
mit Schere/with scissor
diamantbeschichtet/diamond dusted
gerade/straight gebogen/curved
8.700.15DD 15,0 cm **8.701.15DD**
8.700.18DD 18,5 cm **8.701.18DD**



CASTROVIEJO
flacher Griff/flat handle
gerade/straight 14,5 cm gebogen/curved
TC9.312.14 TC profil/jaw **TC9.313.14**
TC9.310.14 TC glatt/smooth **TC9.311.14**
8.614.14DD diamond dusted **8.615.14DD**

Pinzetten

Thump Forceps



Pinzetten
Thumb Forceps

ADSON TC
12,0 cm TC3.924.12
15,0 cm TC3.924.15



ADSON Titanium
12,0 cm 3.040.12TI



ADSON
12,0 cm 3.040.12



ADSON MICRO
12,0 cm 3.044.12



ADSON TC 1 x 2 Z
12,0 cm TC3.925.12
15,0 cm TC3.925.15



ADSON Titanium 1 x 2 Z
12,0 cm 3.150.12TI

Pinzetten Thumb Forceps



ADSON 1 x 2 Z
12,0 cm 3.154.12
15,0 cm 3.154.15



ADSON BROWN TC
12,0 cm TC3.926.12
15,0 cm TC3.926.15



ADSON BROWN Titanium
12,0 cm 3.160.12TI



ADSON BROWN
12,0 cm 3.160.12



ADSON MICRO TC 1 x 2 Z
12,0 cm TC3.928.12
15,0 cm TC3.928.15



ADSON MICRO 1 x 2 Z Titanium
12,0 cm 3.154.12TI

Pinzetten
Thumb Forceps



GILLIES 1 x 2 Z
15,0 cm 3.166.15



GILLIES Titanium 1 x 2 Z
15,0 cm 3.166.15TI



STANDARD TC
14,5 cm TC3.900.14



STANDARD TC
14,5 cm TC3.904.14



CUSHING
18,5 cm TC3.934.18

Pinzetten
Thumb Forceps



BISHOP-HARMON 1 x 2 Z

0,6 mm tip	9,0 mm	3.702.08
0,4 mm tip	9,0 mm	3.704.08
0,6 mm tip serrated	9,0 mm	3.700.08



GREEN Fixation

5 mm tip	10,0 mm	3.733.05
9 mm tip	10,0 mm	3.733.09
12 mm tip	10,0 mm	3.733.12



SEMKEN TC
15,0 cm **TC3.920.15**



SEMKEN TC 1 x 2 Z
15,0 cm **TC3.922.15**



MC INDOE
15,0 cm **3.050.15**

Pinzetten Thumb Forceps



CASTROVIEJO

gerade/straight	10,5 cm	gebogen/curved
3.738.10	0,3 mm tip	3.739.10
3.740.10	0,5 mm tip	3.741.10
3.742.10	0,9 mm tip	3.743.10
3.744.10	1,5 mm tip	3.745.10



CASTROVIEJO Titanium

gerade/straight	10,5 cm	gebogen/curved
3.738.10TI	0,3 mm tip	3.739.10TI
3.740.10TI	0,5 mm tip	3.741.10TI
3.742.10TI	0,9 mm tip	3.743.10TI
3.744.10TI	1,5 mm tip	3.745.10TI



GRAEFE
10,0 cm **3.644.10**



GRAEFE 1 x 2 Z
10,0 cm **3.664.10**



STONE
15,0 cm **3.230.15**



GRAEFE
11,0 cm **3.730.11**
mit Schloss/with Lock
11,0 cm **3.732.11**

Pinzetten Thumb Forceps



CUSHING
17,5 cm 3.074.17



CUSHING angled TC
18,5 cm TC3.937.18



GRUENWALD TC
19,5 cm TC3.944.19



DE BAKEY atraumatic

Länge/length	Spitze/tip	
16 cm	1,5 mm	3.570.16
20 cm	1,5 mm	3.570.20
24 cm	1,5 mm	3.570.24
16 cm	2,0 mm	3.576.16
20 cm	2,0 mm	3.576.20
24 cm	2,0 mm	3.576.24
16 cm	2,4 mm	3.580.16
20 cm	2,4 mm	3.580.20
24 cm	2,4 mm	3.580.24
16 cm	2,7 mm	3.584.16
20 cm	2,7 mm	3.584.20
24 cm	2,7 mm	3.584.24
16 cm	3,5 mm	3.586.16
20 cm	3,5 mm	3.586.20
24 cm	3,5 mm	3.586.24

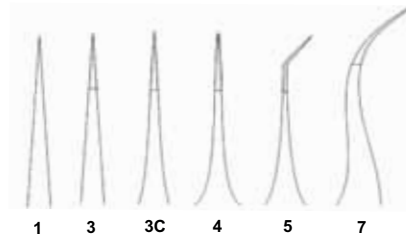


DE BAKEY atraumatic TC

Länge/length	Spitze/tip	
16 cm	1,5 mm	TC3.950.16
20 cm	1,5 mm	TC3.950.20
24 cm	1,5 mm	TC3.950.24
16 cm	2,0 mm	TC3.952.16
20 cm	2,0 mm	TC3.952.20
24 cm	2,0 mm	TC3.952.24
16 cm	2,7 mm	TC3.954.16
20 cm	2,7 mm	TC3.954.20
24 cm	2,7 mm	TC3.954.24
16 cm	3,5 mm	TC3.956.16
20 cm	3,5 mm	TC3.956.20
24 cm	3,5 mm	TC3.956.24

Pinzetten
Thumb Forceps**GRUENWALD Bayonet**
19,0 cm 3.457.19
21,0 cm 3.457.21**LUCAE Bayonet**
14,0 cm 3.437.14**JANSEN Bayonet**
16,0 cm 3.441.16
19,0 cm 3.441.19
21,0 cm 3.441.21

MICRO - Pinzetten MICRO Forceps



Uhrmacherpinzette Jewellers

Länge/length	Fig.	
12,0 cm	1	3.500.12
11,0 cm	3	3.503.11
11,5 cm	3C	3.503.12
11,0 cm	4	3.506.11
11,0 cm	5	3.505.11
11,0 cm	7	3.509.11



MICRO runder Griff, diamantbeschichtet round handle, diamond dusted

gerade/straight		gebogen/curved	
3.810.16	16,0 cm	3.811.16	
3.810.18	18,0 cm	3.811.18	
mit 1,0 mm Ring/with 1.0 mm ring			
gerade/straight		gebogen/curved	
3.818.16	16,0 cm	3.819.16	
3.818.18	18,0 cm	3.819.18	



MICRO runder Griff, diamantbeschichtet, Titan round handle, diamond dusted, Titanium

gerade/straight		gebogen/curved	
3.810.16TI	16,0 cm	3.811.16TI	
3.810.18TI	18,0 cm	3.811.18TI	
mit 1,0 mm Ring/with 1.0 mm ring			
gerade/straight		gebogen/curved	
3.818.16TI	16,0 cm	3.819.16TI	
3.818.18TI	18,0 cm	3.819.18TI	



MICRO - Pinzetten MICRO Forceps



MICRO flacher Griff diamantbeschichtet
flat handle, diamond dusted

gerade/straight		gebogen/curved
3.860.16	16,0 cm	3.861.16
3.860.18	18,0 cm	3.861.18

mit 1,0 mm Ring/with 1.0 mm ring		
gerade/straight		gebogen/curved
3.868.16	16,0 cm	3.869.16
3.868.18	18,0 cm	3.869.18



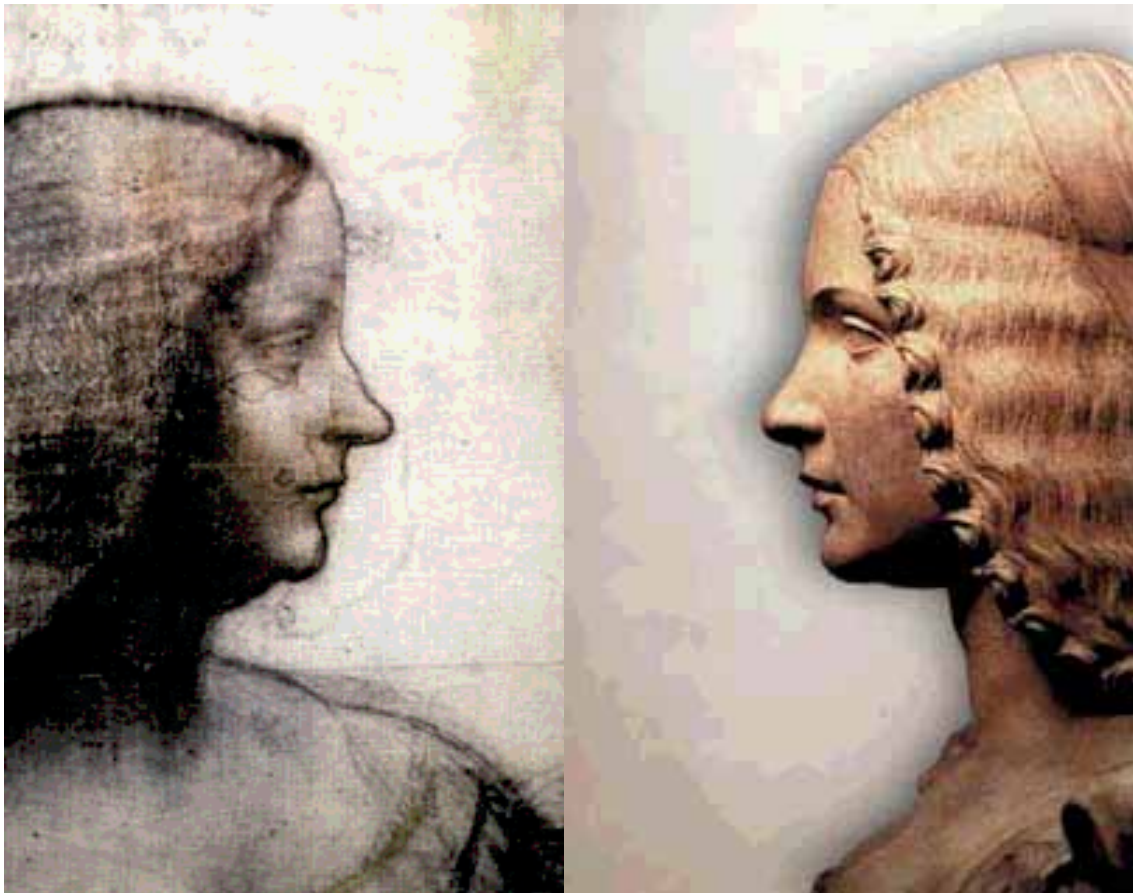
MICRO flacher Griff, diamantbeschichtet, Titan
flat handle, diamond dusted, Titanium

gerade/straight		gebogen/curved
3.860.16TI	16,0 cm	3.861.16TI
3.860.18TI	18,0 cm	3.861.18TI

mit 1,0 mm Ring/with 1.0 mm ring		
gerade/straight		gebogen/curved
3.868.16TI	16,0 cm	3.869.16TI
3.868.18TI	18,0 cm	3.869.18TI

Rhino- und Septum- Plastik Instrumente

Rhino- and Septum- Plastic Instruments



**Messer
Knives**



BALLENGER

Schwingmesser/Swivel

gerade/straight	19,0 cm	gebogen/curved bayonet
26.710.03	3 mm blade	26.711.03
26.710.04	4 mm blade	26.711.04
26.710.05	5 mm blade	26.711.05



JOSEPH

gerade/straight
26.650.15

15 cm

gebogen/curved
26.649.15



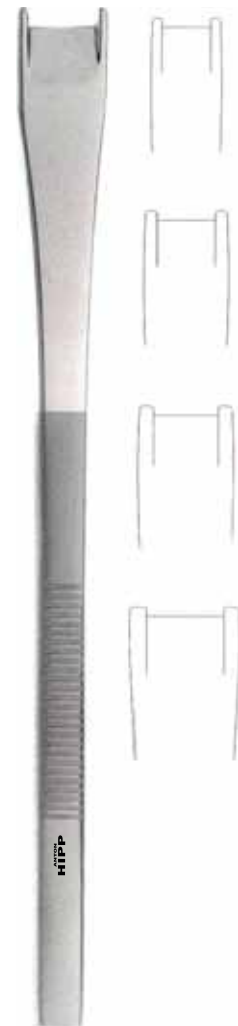
FREER Mucosa

15,5 cm **26.646.15**

Osteotome Osteostomes



RUBIN
Länge/length 18,0 cm
Size
10 mm 26.730.10
12 mm 26.730.12
14 mm 26.730.14
16 mm 26.730.16
18 mm 26.730.18



CINELLI
Länge/length 18,5 cm
Size
10 mm 26.740.10
12 mm 26.740.12
14 mm 26.740.14
16 mm 26.740.16



FREER
Meißel/Chisel

gerade/straight
40.254.04

16 cm

gebogen/curved
40.255.04

Osteotome
Osteostomes**SILVER**

Länge/length 18,0 cm

- 26.741.01 gerade/straight
- 26.741.02 rechts gebogen/curved to the right
- 26.741.03 links gebogen/curved to the left

**ANDERSON-NEIVERT**

Länge/length 21,5 cm

- 26.743.01 gerade/straight
- 26.743.02 rechts gebogen/curved to the right
- 26.743.03 links gebogen/curved to the left

Hämmer
Mallets



40.200.20 **MEAD** 17,0 cm 185 Gramm



Hammer mit auswechselbaren Nylon-Backen
Hammer with replaceable nylon heads
40.201.25 18,5 cm 140 Gramm



40.202.30 **COTTLE** 18,0 cm 235 Gramm

Raspeln
Rasps

FOMON TC
Länge/length 21,5 cm
Size
40.446.01 1 / 2
40.446.02 3 / 4
40.446.03 5 / 6
40.446.04 7 / 8
40.446.05 9 / 10

MALTZ TC
Länge/length 21,5 cm
Size
40.445.11 1
40.445.12 2
40.445.13 3
40.445.14 4
40.445.15 5
40.445.16 6
40.445.17 7
40.445.18 8



Raspeln
Rasps

PEET
diamantbeschichtet/diamond dusted
gerade/straight 40.450.10 19 cm
gebogen/curved 40.450.11



MILLER
Länge/lenght 18,5 cm
Size
40.452.01 1
40.452.02 2
40.452.03 3
40.452.04 4
40.452.05 5
40.452.06 6

Nasenspekula Nasal Speculum



COTTLE
Dünne Blätter mit Stellschraube
thin blades with screw
Länge/length 15 cm
Size
26.531.01 35 mm
26.531.02 55 mm
26.531.03 75 mm



VIENNA
Dünne Blätter
thin blades
Länge/length 14,5 cm
Size
26.515.01 1
26.515.02 2
26.515.03 3



KILLIAN-STRUYKEN
Dünne Blätter mit Stellschraube
thin blades with screw
Länge/length 15 cm
Size
26.524.01 40 mm
26.524.02 55 mm
26.524.03 65 mm
26.524.04 75 mm
26.524.05 90 mm



COTTLE
Dünne Blätter
thin blades
Länge/length 15 cm
Size
26.528.01 35 mm
26.528.02 50 mm
26.528.03 75 mm
26.528.04 90 mm



HALLE-TIECK
Schmale Blätter
Small blades
Länge/length 14,5 cm
Size
26.507.01 1
26.507.02 2

Septum und Periost Elevatorien Septum and Periosteal Elevators



COTTLE
21 cm 26.682.21



JOSEPH
17,5 cm 40.356.17



FREER
spitz/stumpf
sharp/blunt
18,0 cm 26.663.18



FREER
spitz/stumpf
sharp/blunt
20,0 cm 26.663.20

Septum und Periost Elevatorien
Septum and Periosteal Elevators



COTTLE
19,0 cm 10 mm wide **26.682.19**



OBWEGESER
Länge/length 13,5 cm
Size
16.220.06 6 mm
16.220.07 7 mm
16.220.08 8 mm
16.220.11 11 mm



BOIES
Nasenfrakturaufrichter
Nasal fracture manipulator
18,0 cm **26.620.18**

**Wundhaken
Retractors**



FRAZIER
13,0 cm 26.195.13



JOSEPH
16,5 cm 6.154.01



JOSEPH
Länge/length 16,5 cm
6.154.02 Doppelhaken/double hook 2 mm
6.154.05 Doppelhaken/double hook 5 mm
6.154.07 Doppelhaken/double hook 7 mm
6.154.09 Doppelhaken/double hook 9 mm
6.154.10 Doppelhaken/double hook 10 mm



KLEINERT-KUTZ
Länge/length 16,0 cm
Size
6.150.01 3 mm
6.150.02 5 mm
6.150.03 7 mm



COTTLE retro
16,5 cm 26.774.16

**Wundhaken
Retractors**

ROLLET
spitz/sharp
13,5 cm **6.100.04**



MILLER
spitz/sharp
13,5 cm **6.100.09**
stumpf/blunt
13,5 cm **6.100.10**



CURTIN
spitz/sharp
14,5 cm **6.100.06**



RAGNEL-DAVIS
doppelt/double
14,5 cm **6.142.14**



MILLER
doppelt/double
spitz/sharp
16,0 cm **6.139.01**
stumpf/blunt
16,0 cm **6.139.02**

**Wundhaken
Retractors**



GUTHRIE
Länge/length 16,0 cm
Size
6.112.01 2,5 mm
6.112.02 3,5 mm



GILLIES
Länge/length 18,0 cm
Size
6.152.01 2,0 mm
6.152.02 3,0 mm



COTTLE
Länge/length 16,5 cm
26.778.01 spitz/sharp
26.778.02 stumpf/spitz / blunt/sharp
26.778.03 spitz/stumpf / sharp/blunt



FOMON
15,5 cm 26.779.16



FOMON
12,0 cm 26.771.12

**Wundhaken
Retractors**



DEAVER

	Länge/length	Size
6.081.01	18,0 cm	19 mm
6.081.02	22,0 cm	22 mm
6.081.03	23,5 cm	25 mm
6.081.04	30,0 cm	25 mm
6.081.05	31,5 cm	25 mm
6.081.06	36,5 cm	25 mm



PARKER-LANGENBECK
Satz/Set of 2
21,0 cm **6.058.00**



ANDERSON

Länge/length	12,0 cm
6.147.03	mit 3 Zinken/with 3 prongs
6.147.05	mit 5 Zinken/with 5 prongs

Wundhaken / Wundsperrer
Retractors



AUFRICHT
Länge/length 16,5 cm
26.767.16
26.768.16 mit Kaltlicht/with fiber optics



COTTLE
20,0 cm **26.780.20**



WEITLANER
6.217.10 11,5 cm 2 x 3 scharf/sharp
6.217.13 13,0 cm 3 x 4 scharf /sharp

Wundhaken / Wundsperrer
Retractors



DESMARRES
Länge/length 13,5 cm
Size
6.127.08 8 mm
6.127.10 10 mm
6.127.12 12 mm
6.127.14 14 mm
6.127.16 16 mm
6.127.18 18 mm



ALM
Länge/length 7,0 cm
6.212.07 scharf/sharp
6.213.07 stumpf/blunt

Länge/length 10,5 cm
6.212.10 scharf/sharp
6.213.10 stumpf/blunt



HOLZHEIMER
Länge/length 10,5 cm
6.210.10 scharf/sharp
6.210.11 stumpf/blunt

Bleihand und Mundsperrer
Lead Hand and Mouth Gag

Bleihand / Lead hand
47.214.00 für Kinder/for children
47.212.00 für Erwachsene/for adults



DINGMAN
komplett/complete
26.035.00

Zangen und Conchotome
Forceps and conchotomes



KILLIAN
17,0 cm 2.613.17



SHEEN Fragment
18,0 cm 40.043.18



GRUENWALD HENKE
Länge/length 12,0 cm
40.038.12 2,5 mm
40.038.13 3,0 mm



JANSEN MIDDLETON
Länge/length 20,0 cm
26.830.01 aufeinanderschneidend/ spoon jaws
26.830.02 durchschneidend tropfenförmig/small fenestrated jaws
26.830.03 durchschneidend oval/ big fenestrated jaws

Septum Zangen / Nasensäge
Septum Forceps / Nasal saw



JOSEPH

Nasensäge/Nasal saw
Länge/length 18,5 cm

- 26.751.01** Bayonett gebogen links/bayonet angled to the left
- 26.751.02** Bayonett gebogen rechts/bayonet angled to the right
- 26.752.01** gerade/straight



WALSHAM-COTTLE

Länge/length 23,0 cm
26.826.01 gerade/straight
26.826.02 rechts/right
26.826.03 links/left



ASH

22,0 cm **26.825.22**

Knorpelritzzangen / Knochen - Knorpelpresse
Morselizers / Cartilage Crusher / Septum Forceps**RUBIN TC**

Länge/length 20,0 cm

26.846.20 gerade/straight**26.847.20** gebogen/curved**26.845.21** abgewinkelt/angled**COTTLE**
26.576.00

Hohlmeißelzangen / Rongeur / Knochenspliterzange
Rongeurs / Bone- Cutting Forceps



MEAD
16,0 cm 40.627.16



BEYER
18,0 cm 40.649.18



RUSKIN

gerade/straight	18,0 cm	gebogen/curved
40.652.04	4 mm	40.653.04
40.652.05	5 mm	40.653.05
40.652.06	6 mm	40.653.06
40.652.07	7 mm	40.653.07

Knochenspitterzange / Rongeur
Rongeurs / Bone- Cutting Forceps**TAKAHASHI**

12 cm Schaft/ 12 cm shaft

40.044.03 3,5 mm Maullänge/ 3.5 mm bite length

**BÖHLER**gerade/straight
40.708.15

15,5 cm

gebogen/curved
40.709.15

Knochenhaltezangen, Drahtfasszangen
Bone Holding and Wire holding forceps, pliers



DINGMAN
18,5 cm 40.523.18



Drahtfasszange TC übersetzt
Wire holding forceps TC double action
Länge/length 18,0 cm
40.863.02 3 mm
40.863.03 5 mm



Flachzange TC
Flat-nosed plier TC
14,0 cm 40.851.04



Flachzange
Flat nosed plier
geriefte Backen/serrated jaws
40.854.01 17 cm
40.854.02 18 cm

Drahtschneidezangen Wire Cutting Pliers



**Drahtschneidezange TC
Wire cutter/ Pin cutter TC**

Für weichen Draht bis Ø 2,0 mm
Für harten Draht bis Ø 1,6 mm
for soft wire up to Ø 2,0 mm
for hard wire up to Ø 1,6 mm
18 cm **40.873.18**

Für weichen Draht bis Ø 3,0 mm
Für harten Draht bis Ø 2,2 mm
for soft wire up to Ø 3,0 mm
for hard wire up to Ø 2,2 mm
22 cm **40.873.22**



**Drahtschneidezange TC
Wire cutter/ Pin cutter TC**

Für weichen Draht bis Ø 2,0 mm
Für harten Draht bis Ø 1,5 mm
for soft wire up to Ø 2,0 mm
for hard wire up to Ø 1,5 mm
18 cm **40.886.18**

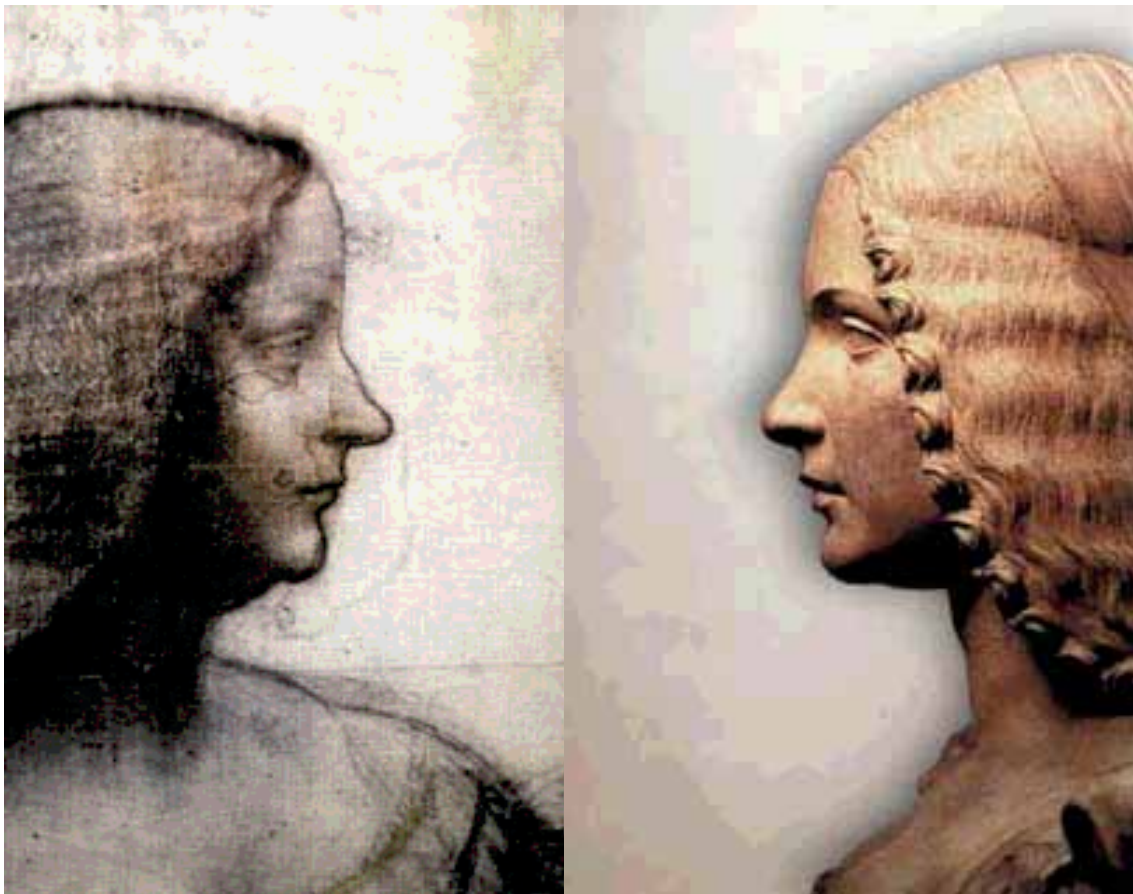


**Cerclage-Draht, weich, in Ringen, 10 m
Cerclage wire, soft, in coils, 10 m**

	Ø	Gauge
40.821.02	0,2 mm	35
40.821.03	0,3 mm	30
40.821.04	0,4 mm	27
40.821.05	0,5 mm	25
40.821.06	0,6 mm	23
40.821.07	0,7 mm	22
40.821.08	0,8 mm	21
40.821.09	0,9 mm	20
40.821.10	1,0 mm	19
40.821.12	1,2 mm	18
40.821.15	1,5 mm	18

**Skalpellgriffe,
Dermatome, Sauginstrumente
Instrumente zum Messen**

**Scalpel Handles, Dermatomomes
Suction tubes
Instruments for Measuring**



Skalpelli Griff
Scalpel Handles

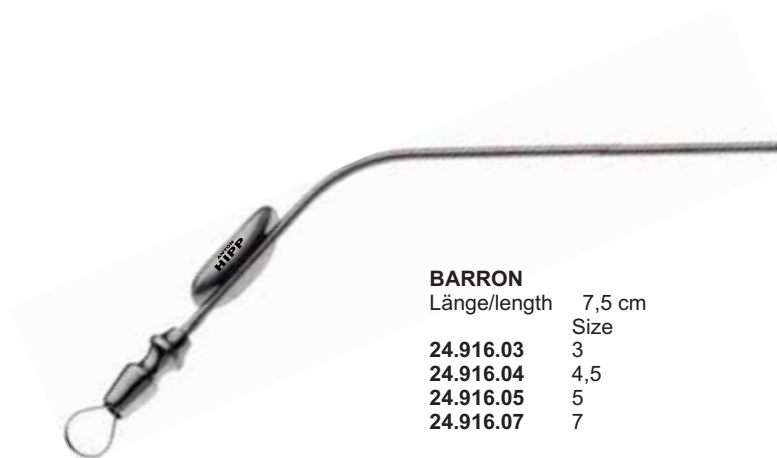
Skalpelli Griff rund
Scalpel handle round
14,5 cm **24.106.03**



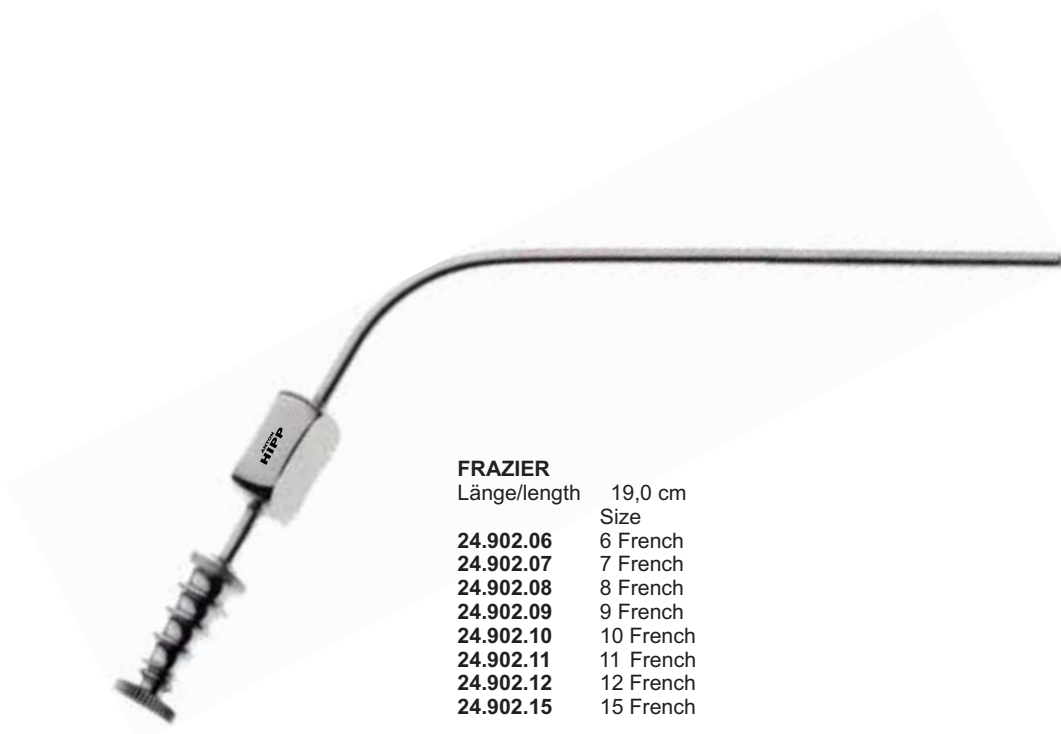
Skalpelli Griff flach
Scalpel handle flat

	Länge/length	Size
24.103.03	12,5 mm	3
24.103.04	20,5 mm	3L
24.104.01	13,5 mm	4
24.104.04	20,5 mm	4L
24.103.06	16,5 mm	7
24.103.07	12,5 mm	7K

Dermatome
Dermatomes**BROWN-BLAIR**29,0 cm **24.406.30**Klinge alleine/blade only
24.406.31**SILVER**19,0 cm **24.402.19****WATSON**30,0 cm **24.406.00**Klinge alleine/blade only
24.406.01

Sauginstrumente
Suction Instruments

BARRON
Länge/length 7,5 cm
Size
24.916.03 3
24.916.04 4,5
24.916.05 5
24.916.07 7



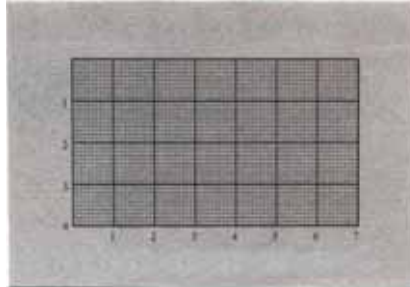
FRAZIER
Länge/length 19,0 cm
Size
24.902.06 6 French
24.902.07 7 French
24.902.08 8 French
24.902.09 9 French
24.902.10 10 French
24.902.11 11 French
24.902.12 12 French
24.902.15 15 French

Instrumente zum Messen
Instruments for Measuring

CASTROVIEJO
9,0 cm 24.016.20



JAMESON
9,5 cm 24.023.09

Instrumente zum Messen
Instruments for Measuring

Schneideblock Titan
Cutting grid Titanium
6 x 8 cm 24.038.00



Finger Winkelmesser
Finger goniometer
18,0 cm 24.021.02



BERTILLON
Tastzirkel/Caliper
32,0 cm 24.032.32



Stahlmaßstab
Steel rule
15,0 cm 24.032.15
20,0 cm 24.032.20
30,0 cm 24.032.30
50,0 cm 24.032.50

Sterilcontainersysteme

Sterile Container System



Lagerungs- und Sterilisationssystem für Instrumente bis 17cm Storage and Sterilization System for Instruments up to 17cm length

Container Container



Mini-Container 200 x 100 x 40 mm
Mini container 200 x 100 x 40 mm
62.420.04

Mini-Container, 200 x 100 x 40 mm, mit Magnetplatte im Boden zur Fixierung von Kleinteilen und Instrumenten
Mini container, 200 x 100 x 40 mm, with magnetic stripe at the bottom to fix small parts and instruments
62.420.05



Mini-Container, 200 x 100 x 40 mm, mit Langzeit-Textilfilter
Mini container, 200 x 100 x 40 mm, with textile filter
62.421.04

Ersatz-Textilfilter (5 Stück) für Container 62.421.10
Spare textile filters (5 pieces) for container 62.421.10
62.803.10

Magnet-Rack Magnetic racks



Magnet-Rack 196 x 96 x 35 mm, aufstellbar
Magnetic rack 196 x 96 x 35 mm, hinged
62.852.02



Rotations-Racks zur sicheren Lagerung fein- und mikrochirurgischer Instrumente Rotation racks for storage of finesurgical and microsurgical instruments



Rotations-Rack 196 x 96 x 35 mm zur Aufnahme von 6 Instrumenten
Rotation rack 196 x 96 x 35 mm for 6 instruments
63.322.06

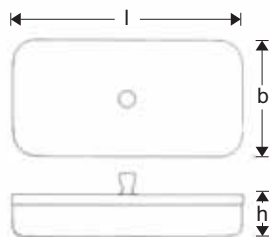


Rotations-Rack 196 x 96 x 35 mm zur Aufnahme von 8 Instrumenten
Rotation rack 196 x 96 x 35 mm for 8 instruments
63.322.08

Rotations-Rack 196 x 96 x 35 mm zur Aufnahme von 5 HNO-Instrumenten und Ohrtrichtern
Rotation rack 196 x 96 x 35 mm for 5 ENT-instruments and ear specula
63.323.07

Sterilisation und Aufbewahrung Sterilization and Conservation

Sterilisier- und Bereitschaftskästen
Sterilizing and storing Cases



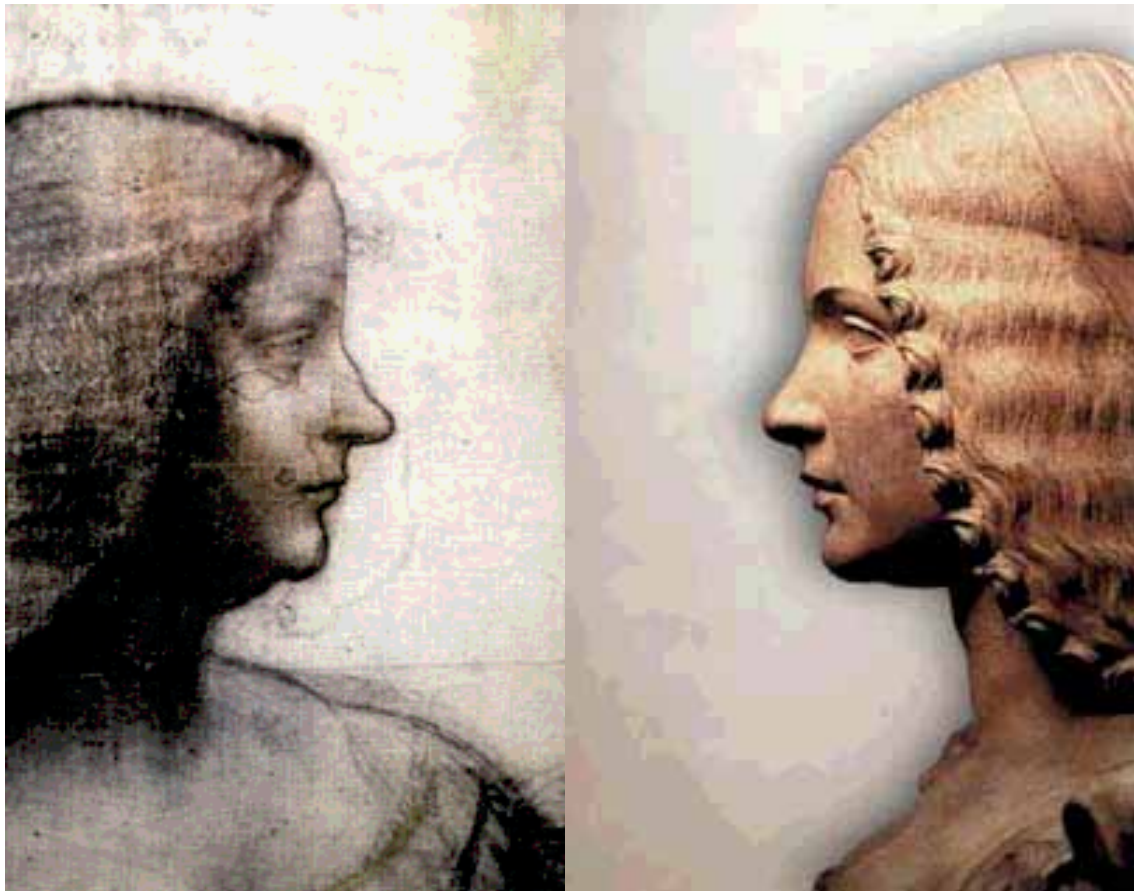
Maße in mm sizes in mm	Behälter Container	Satz Spezialfilter (5 Stück) Set of special filters (5 pieces)
l b h		
230 x 130 x 50	63.300.01	63.304.01
260 x 150 x 50	63.300.02	63.304.02
260 x 150 x 75	63.300.03	63.304.03
300 x 200 x 50	63.300.04	63.304.04
325 x 275 x 50	63.300.05	63.304.05



Gestell, leer, zum Sterilisieren und Aufbewahren
von 6 Ohrzängchen mit Ringgriffen
Rack, empty, for sterilizing and storing
6 Alligator-type ear forceps with ring handles
62.854.06

Inhaltsverzeichnis

Table of contents



Inhaltsverzeichnis

A

Adson	
Arterienklemmen	55
Pinzetten	71-72
Adson Brown	
Pinzetten	72
Aebli	
Feine Scheren	22
Allis	
Gefäßklemmen	56
Alm	
Wundsperrerr	97
Anderson	
Wundhaken	95
Anderson-Neivert	
Osteotome	85
Ash	
Septumzangen	100
Aston	
Face-Lift Scheren	5
Aufricht	
Präparierscheren	42
Wundhaken	96

B

Baby Lexer	
Präparierscheren	21
Baby Olsen Hegar	
Nadelhalter	65
Baby-Metzenbaum	
Präparierscheren	42
Backhaus	
Tuchklemmen	59
Ballenger	
Schwingmesser	83
Barron	
Saugrohre	111
Beebee	
Drahtscheren	33
Bergmann	
Verbandscheren	49
Bertillon	
Messinstrumente	113
Beuse	
Face-Lift Scheren	5
Beyer	
Zangen	102
Bishop Harmon	
Pinzetten	74
Bleihand	
	98
Böhler	
Zangen	103
Boies	
Elevatorien	91
Bonn	
Feine Scheren	27
Böttcher	
Tonsillen- und Nasenschere	8
Brown	
Chirurgische Scheren	41
Brown Blair	
Dermatome	110
Buck	
Ligaturscheren	32

C

Caplan	
Nasenschere	19
Castanares	
Face-Lift Scheren	13
Castroviejo	
Nadelhalter	66-68
Pinzetten	75
Messinstrumente	112
Castroviejo Olsen	
Nadelhalter	68
Castroviejo Ryder	
Nadelhalter	67
Church	
Gefäßschere	12
Cinelli	
Osteotome	84
Converse	
Feine Scheren	24
Converse-Wilmer	
Feine Scheren	24
Corwin	
Drahtspannzangen	61
Cottle	
Tonsillen- und Nasenschere	18
Hammer	86
Nasenspekula	89
Elevatorien	90-91
Wundhaken	92, 94, 96
Knorpelquetsche	101
Crile	
Arterienklemmen	54
Crile Wood	
Nadelhalter	63
Curtin	
Wundhaken	93
Cushing	
Pinzetten	73, 76
D	
Davis	
Face-Lift Scheren	7
Dean	
Tonsillen- und Nasenschere	9
Deaver	
Chirurgische Scheren	38
Wundhaken	95
DeBaKey	
Pinzetten	76
Derf	
Nadelhalter	62
Derf Converse	
Nadelhalter	64
Desmarres	
Wundhaken	97
Dingman	
Mundsperrerr	98
Zangen	104
Drahtzangen	61, 104-105
E	
Eiselsberg	
Ligaturscheren	31

Inhaltsverzeichnis

F

Ferdusson	
Präparierscheren	42
Foerster	
Tuchklemmen	59
Fomon	
Raspeln	87
Wundhaken	94
Tonsillen- und Nasenscheren	17
Foster-Gillies	
Nadelhalter	66
Frazier	
Wundhaken	92
Saugrohre	111
Freeman	
Face-Lift Scheren	13
Freer	
Messer	83
Meißel	84
Elevatorien	90

G

Gefäßscheren	23
Gillies	
Nadelhalter	66
Pinzetten	73
Wundhaken	94
Goldmann-Fox	
Face-Lift Scheren	13
Good	
Tonsillen- und Nasenscheren	9
Gorney	
Face-Lift Scheren	6
Nasenscheren	19
Gorney-Freeman	
Face-Lift Scheren	6
Gorney-Platysma	
Face-Lift Scheren	6
Gorney-Smas-Platysma	
Face-Lift Scheren	5
Graefe	
Feine Scheren	24
Pinzetten	75
Grazil	
Chirurgische Scheren	36-37
Green	
Pinzetten	74
Greenberg-Par	
Blepharoplastic Scheren	20
Gruenwald	
Pinzetten	76-77
Gruenwald Henke	
Zangen	99
Guthrie	
Wundhaken	94

H

Halle Tieck	
Nasenspekula	89
Halsey	
Nadelhalter	62
Halsted Mosquito	
Arterienklemmen	53-54
Hartmann	
Arterienklemmen	53

Harvey

Drahtscheren 33

Heath

Ligaturscheren 32

Hegar Baumgartner

Drahtspannzangen 61

Hegar Vascular

Nadelhalter 63

Heymann

Tonsillen- und Nasenscheren 18

Holzheimer

Wundsperrer 97

I

Inzisionsscheren 38

Iris

Feine Scheren 25-28

J

Jackson

Tonsillen- und Nasenscheren 18

Jameson

Messinstrumente 112

Jansen

Pinzetten 77

Jansen Middleton

Zangen 99

Jones

Tuchklemmen 59

Joseph

Präparierscheren 10

Messer 83

Elevatorien 90

Wundhaken 92

Nasensägen 100

K

Kahn/Beuse

Tonsillen- und Nasenscheren 9

Kaye

Face-Lift Scheren 7

Blepharoplastic Scheren 20

Kaye-Freeman

Face-Lift Scheren 7

Kelly

Präparierscheren 10

Arterienklemmen 54

Killian

Zangen 99

Killian Struyken

Nasenspekula 89

Kleinert-Kutz

Wundhaken 92

Knight

Tonsillen- und Nasenscheren 18

Knowles

Verbandscheren 50

Kocher

Arterienklemmen 55

L

Lagerungsbehälter 117-118

La Grange

Feine Scheren 22

Inhaltsverzeichnis

Lahey			
Gefäßklemmen	56		
Lexer			
Chirurgische Scheren	41		
Lexer-Fino			
Chirurgische Scheren	41		
Lincoln			
Gefäßscheren	12		
Lister			
Verbandscheren	49-50		
Littauer			
Ligaturscheren	32		
Littler			
Ligaturscheren	31		
Locklin			
Präparierscheren	11		
Gefäßscheren	12		
Lorna			
Tuchklemmen	59		
Lucae			
Pinzetten	77		
M			
Maltz			
Raspeln	87		
Mayo			
Chirurgische Scheren	39		
Mayo Hegar			
Drahtspannzangen	61		
Mayo-Noble			
Chirurgische Scheren	40-41		
Mc Guire			
Feine Scheren	22		
Mc Indoe			
Tonsillen- und Nasenschere	8		
Pinzetten	74		
Mead			
Hammer	86		
Zangen	102		
Messinstrumente	113		
Metzenbaum			
Präparierscheren	43-47		
Micro-Pinzetten	78-79		
Mikro-Schere	30		
Micro Vascular			
Nadelhalter	63		
Miller			
Raspeln	88		
Wundhaken	93		
Mixter			
Chirurgische Scheren	38		
Mosquito			
Arterienklemmen	55		
N			
Nerv-Präparierschere	47		
Northbent			
Ligaturschere	31		
O			
Obwegeser			
Elevatoren	91		
Olsen Hegar			
Nadelhalter	65-66		
P			
Par			
Blepharoplastische Scheren	20		
Parker Langenbeck			
Wundhaken	95		
Peck Joseph			
Präparierschere	11		
Peet			
Raspeln	88		
Potts Smith			
Tonsillen- und Nasenschere	9		
Prince			
Tonsillen- und Nasenschere	8		
R			
Ragnel-Davis			
Wundhaken	93		
Raney			
Gefäßklemmen	56		
Rees			
Face-Lift Schere	5		
Reynolds			
Präparierschere	10		
Ribbon Iris			
Feine Schere	29		
Ribbon Kaye			
Blepharoplastische Schere	20		
Ribbon Stevens			
Feine Schere	29		
Ribbon Strabismus			
Feine Schere	29		
Richter			
Chirurgische Schere	38		
Rochester Pean			
Arterienklemmen	54		
Rollet			
Wundhaken	93		
Rubin			
Osteotome	84		
Zangen	101		
Ruskin			
Zangen	102		
Ryder			
Nadelhalter	64		
S			
Sanvenero			
Präparierschere	10		
Schömacker-Loth			
Ligaturschere	31		
Sealy			
Feine Schere	24		
Seiler Turbinate			
Nasenschere	19		
Semken			
Pinzetten	74		
Shea			
Blepharoplastische Schere	20		
Sheen			
Zangen	99		
Shortbent			
Ligaturschere	31		
Silver			
Osteotome	85		
Dermatome	110		

Inhaltsverzeichnis

Skalpellgriffe	109
Smith	
Drahtscheren	33
Spencer	
Ligaturscheren	31
Standard	
Chirurgische Scheren	34-35
Pinzetten	73
Stevens	
Feine Scheren	23
Stone	
Pinzetten	75
Strabismus	
Präparierscheren	21
T	
Takahashi	
Zangen	103
Thorek	
Präparierscheren	48
Tönnis	
Präparierscheren	48
Tönnis Adson	
Präparierscheren	48
U	
Universal	
Drahtscheren	33
V	
Vienna	
Nasenspekula	89
W	
Wagner	
Feine Scheren	26-27
Walsham Cottle	
Septumzangen	100
Watson	
Dermatome	110
Webster	
Nadelhalter	62
Webster Converse	
Nadelhalter	62
Weitlaner	
Wundsperrerr	96

Table of contents

A

Adson	
Artery forceps	55
Forceps	71-72
Adson Brown	
Forceps	72
Aebli	
Fine scissors	22
Allis	
Vascular Forceps	56
Alm	
Retractors	97
Anderson	
Retractors	95
Anderson-Neivert	
Osteotomes	85
Ash	
Septum forceps	100
Aston	
Face lift scissors	5
Aufricht	
Dissecting scissors	42
Retractors	96

B

Baby Lexer	
Dissecting scissors	21
Baby Olsen Hegar	
Needle holders	65
Baby-Metzenbaum	
Dissecting scissors	42
Backhaus	
Towel forceps	59
Ballengier	
Swivels	83
Barron	
Suction tubes	111
Beebee	
Wire cutting scissors	33
Bergmann	
Bandage scissors	49
Bertillon	
Instruments for measuring	113
Beuse	
Face lift scissors	5
Beyer	
Forceps	102
Bishop Harmon	
Forceps	74
Böhler	
Forceps	103
Boies	
Elevators	91
Bonn	
Fine scissors	27
Böttcher	
Tonsil Scissors and Nasal Scissors	8
Brown	
Operating scissors	41
Brown Blair	
Dermatomes	110
Buck	
Suture scissors	32

C

Caplan	
Nasal Scissors	19
Castanares	
Face lift scissors	13
Castroviejo	
Needle holders	66-68
Forceps	75
Instruments for measuring	112
Castroviejo Olsen	
Needle holders	68
Castroviejo Ryder	
Needle holders	67
Church	
Vascular scissors	12
Cinelli	
Osteotomes	84
Converse	
Fine scissors	24
Converse-Wilmer	
Fine scissors	24
Corwin	
Wire Twisters	61
Cottle	
Tonsil Scissors and Nasal Scissors	18
Hammer	86
Nasal speculas	89
Elevators	90-91
Retractors	92, 94, 96
Cartilage crusher	101
Crile	
Artery forceps	54
Crile Wood	
Needle holders	63
Curtin	
Retractors	93
Cushing	
Forceps	73, 76
D	
Davis	
Face lift scissors	7
Dean	
Tonsil Scissors and Nasal Scissors	9
Deaver	
Operating scissors	38
Retractors	95
DeBaKey	
Forceps	76
Derf	
Needle holders	62
Derf Converse	
Needle holders	64
Desmarres	
Retractors	97
Dingman	
Mouth gags	98
Forceps	104
E	
Eiselsberg	
Suture scissors	31

Table of contents

F			
Ferdusson			
Dissecting scissors	42		
Foerster			
Towel forceps	59		
Fomon			
Rasps	87		
Retractors	94		
Tonsil Scissors and Nasal Scissors	17		
Foster-Gillies			
Needle holders	66		
Frazier			
Retractors	92		
Suction tubes	111		
Freeman			
Face lift scissors	13		
Freer			
Knives	83		
Chisels	84		
Elevators	90		
G			
Gillies			
Needle holders	66		
Forceps	73		
Retractors	94		
Goldmann-Fox			
Face lift scissors	13		
Good			
Tonsil Scissors and Nasal Scissors	9		
Gorney			
Face lift scissors	6		
Nasal Scissors	19		
Gorney-Freeman			
Face lift scissors	6		
Gorney-Platysma			
Face lift scissors	6		
Gorney-Smas-Platysma			
Face lift scissors	5		
Graefe			
Fine scissors	24		
Forceps	75		
Grazil			
Operating scissors	36-37		
Green			
Forceps	74		
Greenberg-Par			
Blepharoplasty scissors	20		
Gruenwald			
Forceps	76-77		
Gruenwald Henke			
Forceps	99		
Guthrie			
Retractors	94		
H			
Halle Tieck			
Nasal speculas	89		
Halsey			
Needle holders	62		
Halsted Mosquito			
Artery forceps	53-54		
Hartmann			
Artery forceps	53		
Harvey			
Wire cutting scissors	33		
Heath			
Suture scissors	32		
Hegar Baumgartner			
Wire Twisters	61		
Hegar Vascular			
Needle holders	63		
Heymann			
Tonsil Scissors and Nasal Scissors	18		
Holzheimer			
Retractors	97		
I			
Incision scissors		38	
Instruments for measuring		113	
Iris			25-28
Fine scissors			
J			
Jackson			
Tonsil Scissors and Nasal Scissors		18	
Jameson			
Instruments for measuring		112	
Jansen			
Forceps		77	
Jansen Middleton			
Forceps		99	
Jones			
Towel forceps		59	
Joseph			
Dissecting scissors		10	
Knives		83	
Elevators		90	
Retractors		92	
Nasal saws		100	
K			
Kahn/Beuse			
Tonsil Scissors and Nasal Scissors		9	
Kaye			
Face lift scissors		7	
Blepharoplasty scissors		20	
Kaye-Freeman			
Face lift scissors		7	
Kelly			
Dissecting scissors		10	
Artery forceps		54	
Killian			
Forceps		99	
Killian Struyken			
Nasal speculas		89	
Kleinert-Kutz			
Retractors		92	
Knight			
Tonsil Scissors and Nasal Scissors		18	
Knowles			
Bandage scissors		50	
Kocher			
Artery forceps		55	
L			
La Grange			
Fine scissors		22	

Table of contents

Lahey			
Vascular Forceps	56		
Lead hand	98		
Lexer			
Operating scissors	41		
Lexer-Fino			
Operating scissors	41		
Lincoln			
Vascular scissors	12		
Lister			
Bandage scissors	49-50		
Littauer			
Suture scissors	32		
Littler			
Suture scissors	31		
Locklin			
Dissecting scissors	11		
Vascular scissors	12		
Lorna			
Towel forceps	59		
Lucae			
Forceps	77		
M			
Maltz			
Rasps	87		
Mayo			
Operating scissors	39		
Mayo Hegar			
Wire Twisters	61		
Mayo-Noble			
Operating scissors	40-41		
Mc Guire			
Fine scissors	22		
Mc Indoe			
Tonsil Scissors and Nasal Scissors	8		
Forceps	74		
Mead			
Hammer	86		
Forceps	102		
Metzenbaum			
Dissecting scissors	43-47		
Micro forceps	78-79		
Micro scissors	30		
Micro Vascular			
Needle holders	63		
Miller			
Rasps	88		
Retractors	93		
Mixter			
Operating scissors	38		
Mosquito			
Artery forceps	55		
N			
Nerv dissecting scissors	47		
Northbent			
Suture scissors	31		
O			
Obwegeser			
Elevators	91		
Olsen Hegar			
Needle holders	65-66		
P			
Par			
Blepharoplasty scissors	20		
Parker Langenbeck			
Retractors	95		
Peck Joseph			
Dissecting scissors	11		
Peet			
Rasps	88		
Potts Smith			
Tonsil Scissors and Nasal Scissors	9		
Prince			
Tonsil Scissors and Nasal Scissors	8		
R			
Ragnel-Davis			
Retractors	93		
Raney			
Vascular Forceps	56		
Rees			
Face lift scissors	5		
Reynolds			
Dissecting scissors	10		
Ribbon Iris			
Fine scissors	29		
Ribbon Kaye			
Blepharoplasty scissors	20		
Ribbon Stevens			
Fine scissors	29		
Ribbon Strabismus			
Fine scissors	29		
Richter			
Operating scissors	38		
Rochester Pean			
Artery forceps	54		
Rollet			
Retractors	93		
Rubin			
Osteotomes	84		
Forceps	101		
Ruskin			
Forceps	102		
Ryder			
Needle holders	64		
S			
Sanvenero			
Dissecting scissors	10		
Scalpel handle	109		
Schömmacker-Loth			
Suture scissors	31		
Sealy			
Fine scissors	24		
Seiler Turbinate			
Nasal Scissors	19		
Semken			
Forceps	74		
Shea			
Blepharoplasty scissors	20		
Sheen			
Forceps	99		
Shortbent			
Suture scissors	31		
Silver			
Osteotomes	85		

Table of contents

Dermatomes	110
Smith	
Wire cutting scissors	33
Spencer	
Suture scissors	31
Standard	
Operating scissors	34-35
Forceps	73
Stevens	
Fine scissors	23
Stone	
Forceps	75
Storing cases	117-118
Strabismus	
Dissecting scissors	21
T	
Takahashi	
Forceps	103
Thorek	
Dissecting scissors	48
Tönnis	
Dissecting scissors	48
Tönnis Adson	
Dissecting scissors	48
U	
Universal	
Wire cutting scissors	33
V	
Vessel scissor	23
Vienna	
Nasal speculas	89
W	
Wagner	
Fine scissors	26-27
Walsham Cottle	
Septum forceps	100
Watson	
Dermatomes	110
Webster	
Needle holders	62
Webster Converse	
Needle holders	62
Weitlaner	
Retractors	96
Wire forceps	61, 104-15

Artikelnummernverzeichnis Numerical Index

Art.-Nr.	Seite		Art.-Nr.	Seite		Art.-Nr.	Seite		Art.-Nr.	Seite
1			1.012.14	36		1.051.14	44		1.064.14	20
1.000.10	34		1.013.13	37		1.051.18	44		1.064.18	45
1.000.11	34		1.013.14	37		1.051.20	44		1.064.20	45
1.000.13	34		1.014.13	36		1.051.23	44		1.064.23	45
1.000.14	34		1.014.14	36		1.051.25	44		1.065.14	46
1.000.15	34		1.015.13	37		1.051.28	44		1.065.14	20
1.000.16	34		1.015.14	37		1.051.30	44		1.065.18	46
1.000.17	34		1.020.15	38		1.052.13	43		1.065.20	46
1.000.18	34		1.021.15	38		1.052.14	43		1.065.23	46
1.000.20	34		1.022.14	38		1.052.18	43		1.067.14	47
1.001.10	35		1.023.14	38		1.052.20	43		1.067.18	47
1.001.11	35		1.027.14	38		1.052.23	43		1.067.20	47
1.001.13	35		1.028.13	38		1.052.25	43		1.067.23	47
1.001.14	35		1.028.14	38		1.052.28	43		1.067.25	47
1.001.15	35		1.028.15	38		1.052.30	43		1.070.15	47
1.001.16	35		1.028.16	38		1.053.13	44		1.071.15	47
1.001.17	35		1.030.14	39		1.053.14	44		1.074.15	47
1.001.18	35		1.030.15	39		1.053.18	44		1.075.15	47
1.001.20	35		1.030.17	39		1.053.20	44		1.081.18	48
1.002.10	34		1.030.19	39		1.053.23	44		1.089.19	48
1.002.11	34		1.030.23	39		1.053.25	44		1.089.25	48
1.002.13	34		1.030.30	39		1.053.28	44		1.090.18	48
1.002.14	34		1.031.14	39		1.053.30	44		1.091.18	48
1.002.15	34		1.031.15	39		1.054.11	20		1.094.19	8
1.002.16	34		1.031.17	39		1.054.13	43		1.100.17	5
1.002.17	34		1.031.19	39		1.054.14	43		1.100.20	5
1.002.18	34		1.031.23	39		1.054.18	43		1.101.17	5
1.002.20	34		1.031.30	39		1.054.20	43		1.101.20	5
1.003.10	35		1.034.15	40		1.054.23	43		1.105.17	8
1.003.11	35		1.034.17	40		1.054.25	43		1.110.19	6
1.003.13	35		1.034.19	40		1.054.28	43		1.110.23	6
1.003.14	35		1.034.21	40		1.054.30	43		1.111.19	6
1.003.15	35		1.034.23	40		1.055.11	20		1.111.23	6
1.003.16	35		1.035.15	40		1.055.13	44		1.114.18	6
1.003.17	35		1.035.17	40		1.055.14	44		1.115.17	7
1.003.18	35		1.035.19	40		1.055.18	44		1.115.18	8
1.003.20	35		1.035.21	40		1.055.20	44		1.115.185	6
1.004.10	34		1.035.23	40		1.055.23	44		1.115.19	9
1.004.11	34		1.036.16	41		1.055.25	44		1.116.14	5
1.004.13	34		1.037.16	41		1.055.28	44		1.116.14	9
1.004.14	34		1.038.16	41		1.055.30	44		1.116.18	5
1.004.15	34		1.039.16	41		1.058.11	20		1.116.18	9
1.004.16	34		1.040.14	41		1.059.11	20		1.117.14	5
1.004.17	34		1.040.16	41		1.060.14	45		1.117.14	9
1.004.18	34		1.041.14	41		1.060.18	45		1.117.18	5
1.004.20	34		1.041.16	41		1.060.20	45		1.117.18	9
1.005.10	35		1.045.14	42		1.060.23	45		1.120.19	9
1.005.11	35		1.047.18	42		1.061.14	46		1.124.17	9
1.005.13	35		1.047.20	42		1.061.18	46		1.129.13	17
1.005.14	35		1.050.11	42		1.061.20	46		1.131.13	17
1.005.15	35		1.050.13	43		1.061.23	46		1.135.13	17
1.005.16	35		1.050.14	43		1.062.14	45		1.137.13	17
1.005.17	35		1.050.18	43		1.062.18	45		1.137.17	19
1.005.18	35		1.050.20	43		1.062.20	45		1.139.16	18
1.005.20	35		1.050.23	43		1.062.23	45		1.147.18	18
1.010.13	36		1.050.25	43		1.063.14	46		1.147.20	18
1.010.14	36		1.050.28	43		1.063.18	46		1.149.18	18
1.011.13	37		1.050.30	43		1.063.20	46		1.149.20	18
1.011.14	37		1.051.11	42		1.063.23	46		1.175.19	7
1.012.13	36		1.051.13	44		1.064.14	45		1.250.09	21

Artikelnummernverzeichnis Numerical Index

Art.-Nr.	Seite		Art.-Nr.	Seite		Art.-Nr.	Seite		Art.-Nr.	Seite
1.250.11	21		1.311.10	28		1.471.12	33		2.011.18	55
1.251.09	21		1.311.11	28		1.474.10	33		2.011.21	55
1.251.11	21		1.313.11	28		1.474.12	33		2.012.18	55
1.254.11	20		1.314.14	10		1.475.10	33		2.012.21	55
1.255.11	20		1.314.17	10		1.475.12	33		2.013.18	55
1.260.10	21		1.315.14	10		1.477.12	33		2.013.21	55
1.261.10	21		1.315.17	10		1.480.12	33		2.020.14	54
1.264.10	22		1.316.14	10		1.484.13Z	13		2.021.14	54
1.265.10	22		1.317.14	10		1.485.13Z	13		2.028.14	54
1.267.10	22		1.318.14	11		1.487.13	13		2.028.16	54
1.269.11	22		1.319.14	11		1.494.16	33		2.028.18	54
1.270.10	23		1.324.13	10		1.495.16	33		2.028.20	54
1.270.11	23		1.324.15	10		1.507.09	49		2.028.22	54
1.271.09	23		1.324.18	10		1.507.11	49		2.028.24	54
1.271.10	23		1.324.20	10		1.507.14	49		2.029.14	54
1.271.11	23		1.324.23	10		1.507.16	49		2.029.16	54
1.274.10	23		1.325.13	10		1.507.18	49		2.029.18	54
1.274.11	23		1.325.15	10		1.507.20	49		2.029.20	54
1.275.09	23		1.325.18	10		1.507.23	49		2.029.22	54
1.275.10	23		1.325.20	10		1.509.16	50		2.036.14	55
1.275.11	23		1.325.23	10		1.509.20	50		2.036.16	55
1.284.09	25		1.334.16	10		1.514.14	50		2.036.18	55
1.284.10	25		1.334.18	10		1.517.14	50		2.036.20	55
1.284.11	24		1.335.16	10		1.700.10	29		2.036.22	55
1.285.09	25		1.335.18	10		1.701.10	29		2.036.24	55
1.285.10	25		1.344.11	20		1.702.10	29		2.037.14	55
1.285.11	24		1.345.11	20		1.703.10	29		2.037.16	55
1.286.10	25		1.345.17	13		1.704.09	29		2.037.18	55
1.287.10	25		1.350.11	65		1.704.10	29		2.037.20	55
1.288.10	26		1.350.14	65		1.705.09	29		2.037.22	55
1.288.11	26		1.350.17	65		1.705.10	29		2.037.24	55
1.289.10	26		1.350.18	65		1.710.09	29		2.040.14	54
1.289.11	26		1.356.14	65		1.711.09	29		2.040.16	54
1.290.12	26		1.360.11	31		1.714.09	29		2.041.14	54
1.291.12	26		1.364.12	31		1.715.09	29		2.041.16	54
1.292.12	26		1.371.11	31		1.716.10	20		2.042.14	54
1.293.12	26		1.371.14	31		1.717.10	20		2.042.16	54
1.294.12	26		1.371.18	31		2			2.043.14	54
1.295.12	26		1.372.09	31		2.000.10	53		2.043.16	54
1.297.11	27		1.372.10	31		2.000.12TI	53		2.064.18	55
1.304.08	27		1.372.12	31		2.001.10	53		2.065.18	55
1.304.09	27		1.377.09	31		2.001.12TI	53		2.066.18	55
1.304.10	27		1.377.13	31		2.002.10	54		2.067.18	55
1.304.11	27		1.379.11	31		2.002.12	54		2.148.16	56
1.304.12	27		1.382.13	32		2.002.14	54		2.251.08	57
1.305.08	27		1.382.14	32		2.003.10	54		2.251.11	57
1.305.09	27		1.392.14	32		2.003.12	54		2.251.13	57
1.305.10	27		1.392.18	32		2.003.14	54		2.251.15	57
1.305.11	27		1.397.15	32		2.004.12	53		2.256.05	57
1.305.12	27		1.440.16	13		2.004.12TI	53		2.256.09	57
1.306.09	24		1.440.17	12		2.005.12	53		2.257.10	57
1.306.10	24		1.441.16	13		2.005.12TI	53		2.257.13	57
1.306.11	24		1.441.17	12		2.006.12	53		2.310.18	57
1.307.11	28		1.442.17	12		2.007.12	53		2.310.20	57
1.308.10	28		1.443.17	12		2.008.10	54		2.310.25	57
1.308.11	28		1.445.16	11		2.008.12	54		2.311.18	57
1.309.10	28		1.447.16	12		2.009.10	54		2.311.20	57
1.309.11	28		1.470.10	33		2.009.12	54		2.311.25	57
1.310.10	28		1.470.12	33		2.010.18	55		2.312.18	57
1.310.11	28		1.471.10	33		2.010.21	55		2.312.20	57

Artikelnummernverzeichnis Numerical Index

Art.-Nr.	Seite		Art.-Nr.	Seite		Art.-Nr.	Seite		Art.-Nr.	Seite
2.312.25	57		3.733.09	74		6.100.09	93		8.626.18DD	67
2.313.18	57		3.733.12	74		6.100.10	93		8.660.15DD	66
2.313.20	57		3.738.10	75		6.112.01	94		8.660.16DD	66
2.313.25	57		3.738.10TI	75		6.112.02	94		8.660.18DD	66
2.392.12	56		3.739.10	75		6.127.08	97		8.661.15DD	66
2.392.15	56		3.739.10TI	75		6.127.10	97		8.661.16DD	66
2.394.15	56		3.740.10	75		6.127.12	97		8.661.18DD	66
2.394.19	56		3.740.10TI	75		6.127.14	97		8.672.14DD	68
2.394.25	56		3.741.10	75		6.127.16	97		8.672.18DD	68
2.613.17	99		3.741.10TI	75		6.127.18	97		8.680.14DD	68
3			3.742.10	75		6.139.01	93		8.680.14TI	68
3.040.12	71		3.742.10TI	75		6.139.02	93		8.680.18DD	68
3.040.12TI	71		3.743.10	75		6.142.14	93		8.680.18TI	68
3.044.12	71		3.743.10TI	75		6.147.03	95		8.681.15TI	68
3.050.15	74		3.744.10	75		6.147.05	95		8.681.18TI	68
3.074.17	76		3.744.10TI	75		6.150.01	92		8.700.15DD	68
3.150.12TI	71		3.745.10	75		6.150.02	92		8.700.18DD	68
3.154.12	72		3.745.10TI	75		6.150.03	92		8.701.15DD	68
3.154.12TI	72		3.810.16	78		6.152.01	94		8.701.18DD	68
3.154.15	72		3.810.16TI	78		6.152.02	94	10		
3.160.12	72		3.810.18	78		6.154.01	92		16.220.06	91
3.160.12TI	72		3.810.18TI	78		6.154.02	92		16.220.07	91
3.166.15	73		3.811.16	78		6.154.03	92		16.220.08	91
3.166.15TI	73		3.811.16TI	78		6.154.04	92		16.220.11	91
3.230.15	75		3.811.18	78		6.154.05	92	20		
3.437.14	77		3.811.18TI	78		6.210.10	97		20.130.00	56
3.441.16	77		3.818.16	78		6.210.11	97		22.500.01	61
3.441.19	77		3.818.16TI	78		6.212.07	97		22.500.02	61
3.441.21	77		3.818.18	78		6.212.10	97		22.500.11	61
3.457.19	77		3.818.18TI	78		6.213.07	97		22.500.12	61
3.457.21	77		3.819.16	78		6.213.10	97		24.016.20	112
3.500.12	78		3.819.16TI	78		6.217.10	96		24.021.02	113
3.503.11	78		3.819.18	78		6.217.13	96		24.023.09	112
3.503.12	78		3.819.18TI	78	7				24.032.15	113
3.505.11	78		3.860.16	79		7.142.14	30		24.032.20	113
3.506.11	78		3.860.16TI	79		7.142.14TI	30		24.032.30	113
3.509.11	78		3.860.18	79		7.142.18	30		24.032.32	113
3.570.16	76		3.860.18TI	79		7.142.18TI	30		24.032.50	113
3.570.20	76		3.861.16	79		7.143.14	30		24.038.00	113
3.570.24	76		3.861.16TI	79		7.143.14TI	30		24.103.03	109
3.576.16	76		3.861.18	79		7.143.18	30		24.103.04	109
3.576.20	76		3.861.18TI	79		7.143.18TI	30		24.103.06	109
3.576.24	76		3.868.16	79		7.188.14	30		24.103.07	109
3.580.16	76		3.868.16TI	79		7.188.14TI	30		24.104.01	109
3.580.20	76		3.868.18	79		7.188.18	30		24.104.04	109
3.580.24	76		3.868.18TI	79		7.188.18TI	30		24.106.03	109
3.584.16	76		3.869.16	79		7.189.14	30		24.402.19	110
3.584.20	76		3.869.16TI	79		7.189.14TI	30		24.406.00	110
3.584.24	76		3.869.18	79		7.189.18	30		24.406.30	110
3.586.16	76		3.869.18TI	79		7.189.18TI	30		24.821.02	105
3.586.20	76	6			8				24.821.03	105
3.586.24	76		6.058.00	95		8.614.14DD	68		24.821.04	105
3.644.10	75		6.081.01	95		8.615.14DD	68		24.821.05	105
3.664.10	75		6.081.02	95		8.622.14DD	67		24.821.06	105
3.700.08	74		6.081.03	95		8.622.18DD	67		24.821.07	105
3.702.08	74		6.081.04	95		8.624.14TI	67		24.821.08	105
3.704.08	74		6.081.05	95		8.624.18TI	67		24.821.09	105
3.730.11	75		6.081.06	95		8.625.15TI	67		24.821.10	105
3.732.11	75		6.100.04	93		8.625.18TI	67		24.821.12	105
3.733.05	74		6.100.06	93		8.626.14DD	67		24.821.15	105

Artikelnummernverzeichnis Numerical Index

Art.-Nr.	Seite		Art.-Nr.	Seite		Art.-Nr.	Seite		Art.-Nr.	Seite
24.902.06	111		26.743.02	85		40.649.18	102		S1.111.23	6
24.902.07	111		26.743.03	85		40.652.04	102		S1.114.18	6
24.902.08	111		26.751.01	100		40.652.05	102		S1.115.17	7
24.902.09	111		26.751.02	100		40.652.06	102		S1.115.18	6
24.902.10	111		26.751.03	100		40.652.07	102		S1.116.14	7
24.902.11	111		26.767.16	96		40.653.04	102		S1.116.18	7
24.902.12	111		26.768.16	96		40.653.05	102		S1.116.23	7
24.902.15	111		26.771.12	94		40.653.06	102		S1.117.14	7
24.916.03	111		26.774.16	92		40.653.07	102		S1.117.18	7
24.916.04	111		26.778.01	94		40.708.15	103		S1.117.23	7
24.916.05	111		26.778.02	94		40.709.15	103		S1.175.17	7
24.916.07	111		26.778.03	94		40.838.16	61		S1.254.11	20
26.035.00	98		26.779.16	94		40.851.04	104		S1.255.11	20
26.158.03	23		26.780.20	96		40.854.01	104		S1.284.11	24
26.195.13	92		26.825.22	100		40.854.02	104		S1.285.11	24
26.507.01	89		26.826.01	100		40.854.17	23		S1.318.14	11
26.507.02	89		26.826.02	100		40.863.02	104		S1.319.14	11
26.515.01	89		26.826.03	100		40.863.03	104		S1.334.16	10
26.515.02	89		26.830.01	99		40.873.18	105		S1.334.18	10
26.515.03	89		26.830.02	99		40.873.22	105		S1.335.16	10
26.524.01	89		26.830.03	99		40.886.18	105		S1.335.18	10
26.524.02	89		26.841.20TC	19		47.212.00	98		S1.344.11	20
26.524.03	89		26.842.20TC	19		47.214.00	98		S1.345.11	20
26.524.04	89		26.845.21	101		60			S1.345.17	13
26.524.05	89		26.846.20	101		62.420.04	117		S1.347.20	5
26.528.01	89		26.847.20	101		62.420.05	117		S1.445.16	11
26.528.02	89		40			62.421.04	117		S1.484.13	13
26.528.03	89		40.038.12	99		62.803.10	117		S1.485.13	13
26.528.04	89		40.038.13	99		62.852.01	117		S1.844.14	20
26.531.01	89		40.043.18	99		62.852.02	117		S1.845.14	20
26.531.02	89		40.044.03	103		62.854.06	118		S1.868.11	20
26.531.03	89		40.200.20	86		63.300.01	118		S1.869.11	20
26.576.00	101		40.201.25	86		63.300.02	118		S1.876.11	24
26.620.18	91		40.202.30	86		63.300.03	118		S1.877.11	24
26.646.15	83		40.254.04	84		63.300.04	118		S1.881.16	11
26.649.15	83		40.255.04	84		63.300.05	118		S1.894.13	13
26.650.15	83		40.356.17	90		63.304.01	118		S1.895.13	13
26.663.18	90		40.445.11	87		63.304.02	118		S1.948.14	11
26.663.20	90		40.445.12	87		63.304.03	118		S1.949.14	11
26.681.22	90		40.445.13	87		63.304.04	118		S1.956.11	20
26.682.19	91		40.445.14	87		63.304.05	118		S1.957.11	20
26.710.03	83		40.445.15	87		63.322.06	117		S1.958.11	20
26.710.04	83		40.445.16	87		63.322.08	117		S1.959.11	20
26.710.05	83		40.445.17	87		63.323.07	117		S1.964.16	10
26.711.03	83		40.445.18	87		S			S1.965.16	10
26.711.04	83		40.446.01	87		S1.054.11	20		S1.970.145	7
26.711.05	83		40.446.02	87		S1.054.14	20		S1.970.15	7
26.730.10	84		40.446.03	87		S1.055.11	20		S1.970.18	7
26.730.12	84		40.446.04	87		S1.055.14	20		S1.970.23	7
26.730.14	84		40.446.05	87		S1.058.11	20		S1.971.145	7
26.730.16	84		40.450.10	88		S1.059.11	20		S1.971.18	7
26.730.18	84		40.450.11	88		S1.100.17	5		S1.971.23	7
26.740.10	84		40.452.01	88		S1.100.20	5		S1.973.18	7
26.740.12	84		40.452.02	88		S1.101.17	5		S1.974.18	6
26.740.14	84		40.452.03	88		S1.107.20	5		S1.974.185	6
26.740.16	84		40.452.04	88		S1.110.15	7		S1.974.23	6
26.741.01	85		40.452.05	88		S1.110.19	6		S1.975.15	7
26.741.02	85		40.452.06	88		S1.110.23	6		S1.975.18	6
26.741.03	85		40.523.18	104		S1.111.15	7		S1.975.185	6
26.743.01	85		40.627.16	102		S1.111.19	6		S1.975.23	6

Artikelnummernverzeichnis Numerical Index

Art.-Nr.	Seite		Art.-Nr.	Seite		Art.-Nr.	Seite
S1.991.18	13		TC3.950.20	76		TC9.310.14	68
S1.991.20	5		TC3.950.24	76		TC9.311.14	68
TC			TC3.952.16	76		TC9.312.14	68
TC1.844.14	20		TC3.952.20	76		TC9.313.14	68
TC1.845.14	20		TC3.952.24	76		TC9.360.15	66
TC1.868.11	20		TC3.954.16	76		TC9.360.16	66
TC1.869.11	20		TC3.954.20	76		TC9.360.18	66
TC1.876.11	24		TC3.954.24	76		TC9.361.15	66
TC1.877.11	24		TC3.956.16	76		TC9.361.16	66
TC1.881.16	11		TC3.956.20	76		TC9.361.18	66
TC1.894.13	13		TC3.956.24	76			
TC1.895.13	13		TC9.002.14	61			
TC1.948.14	11		TC9.002.16	61			
TC1.949.14	11		TC9.002.18	61			
TC1.956.11	20		TC9.002.20	61			
TC1.957.11	20		TC9.002.24	61			
TC1.958.11	20		TC9.002.26	61			
TC1.959.11	20		TC9.014.15	63			
TC1.964.16	10		TC9.014.18	63			
TC1.965.16	10		TC9.014.20	63			
TC1.970.145	7		TC9.014.23	63			
TC1.970.15	7		TC9.022.13	61			
TC1.970.18	7		TC9.022.14	61			
TC1.970.23	7		TC9.026.13	62			
TC1.971.145	7		TC9.028.13	62			
TC1.971.18	7		TC9.030.12	62			
TC1.971.23	7		TC9.030.13	62			
TC1.973.18	7		TC9.032.12	62			
TC1.974.17	5		TC9.034.12	64			
TC1.974.18	6		TC9.048.14	66			
TC1.974.185	6		TC9.048.16	66			
TC1.974.19	5		TC9.048.18	66			
TC1.974.23	6		TC9.049.11	66			
TC1.975.15	7		TC9.049.15	66			
TC1.975.16	5		TC9.049.16	66			
TC1.975.17	5		TC9.050.11	66			
TC1.975.18	6		TC9.050.15	66			
TC1.975.185	6		TC9.100.14	63			
TC1.975.19	5		TC9.100.18	63			
TC1.975.20	5		TC9.100.20	63			
TC1.975.23	6		TC9.100.23	63			
TC1.990.16	13		TC9.106.14	63			
TC1.991.18	13		TC9.106.18	63			
TC1.991.20	5		TC9.106.20	63			
TC3.900.14	73		TC9.106.23	63			
TC3.904.14	73		TC9.108.13	64			
TC3.920.15	74		TC9.108.15	64			
TC3.922.15	74		TC9.108.18	64			
TC3.924.12	71		TC9.108.20	64			
TC3.924.15	71		TC9.108.23	64			
TC3.925.12	71		TC9.110.13	64			
TC3.925.15	71		TC9.110.15	64			
TC3.926.12	72		TC9.110.18	64			
TC3.926.15	72		TC9.110.20	64			
TC3.928.12	72		TC9.110.23	64			
TC3.928.15	72		TC9.112.13	64			
TC3.934.18	73		TC9.112.15	64			
TC3.937.18	76		TC9.112.18	64			
TC3.944.19	76		TC9.112.20	64			
TC3.950.16	76		TC9.112.23	64			

ANTON HIPPI GmbH
Instruments & Implants

Annastrasse 25/1
D- 78567 Fridingen
Germany

Postfach 80
78567 Fridingen
Germany

Tel: +49-(0)7463-99303-0
Fax: +49-(0)7463-99303-50

Mail: info@anton-hipp.de
www.anton-hipp.de